

Böj 90°, svetsad

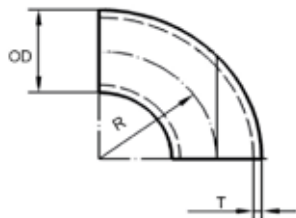
3D / 5D / 1.5d / 1.5ID / ID+100
EN 10204 3.1



OD mm	T mm	Typ	R mm	Kg / st	Artikel nummer	EN 1.4301	EN 1.4404	EN 1.4571
13.50	1.60	1.5d	21.0	0.02	EB15	●	●	
13.50	2.30	1.5d	21.0	0.02	EB15	●		
15.00	1.50	1.5d	22.0	0.02	EB15	●	●	
17.20	1.60	1.5d	28.0	0.03	EB10	●	●	
17.20	2.00	3D	28.0	0.03	EB10	●	●	
17.20	2.30	1.5d	28.0	0.04	EB15	●	●	
18.00	1.50	1.5d	22.5	0.03	EB15	●	●	
20.00	1.50	1.5d	30.0	0.03	EB15	●	●	
20.00	2.00	1.5d	23.0	0.04	EB15	●	●	
20.00	2.00	1.5d	30.0	0.04	EB15	●	●	
21.30	1.60	3D	28.0	0.04	EB10	●	●	
21.30	1.60	1.5d	38.0	0.04	EB15		●	
21.30	2.00	3D	28.0	0.04	EB10	●	●	●
21.30	2.00	1.5d	31.8	0.04	EB15		●	
21.30	2.00	1.5d	38.0	0.04	EB15	●		
21.30	2.00	5D	45.0	0.07	EB56	●	●	
21.30	2.60	3D	28.0	0.05	EB10	●	●	●
21.30	2.60	1.5d	38.0	0.05	EB15	●	●	
25.00	1.50	1.5d	38.1	0.05	EB15	●		
25.00	2.00	1.5d	27.5	0.06	EB15	●	●	
25.00	2.00	1.5d	38.1	0.06	EB15	●		
26.90	1.60	3D	29.0	0.04	EB10	●	●	
26.90	2.00	3D	29.0	0.06	EB10	●	●	●
26.90	2.00	5D	57.0	0.11	EB56	●		
26.90	2.60	3D	29.0	0.07	EB10	●	●	●
28.00	1.50	1.5d	31.8	0.05	EB15	●		
28.00	1.50	1.5d	42.0	0.06	EB15	●		
28.00	2.00	1.5d	42.0	0.07	EB15		●	
30.00	2.00	1.5d	38.0	0.06	EB15	●	●	
30.00	2.00	1.5d	45.0	0.07	EB15	●	●	
32.00	1.50	1.5d	48.0	0.09	EB15		●	
32.00	2.00	1.5d	48.0	0.11	EB15	●	●	
33.70	1.60	3D	38.0	0.08	EB10	●	●	
33.70	2.00	3D	38.0	0.10	EB10	●	●	●
33.70	2.00	5D	72.0	0.18	EB56	●	●	
33.70	2.60	3D	38.0	0.12	EB10	●	●	●
33.70	3.00	3D	38.0	0.12	EB10	●	●	
33.70	3.20	3D	38.0	0.17	EB10	●	●	●
35.00	1.50	1.5d	52.5	0.10	EB15	●	●	
35.00	2.00	1.5d	45.0	0.11	EB15	●		
35.00	2.00	1.5d	52.5	0.14	EB15	●		
38.10	1.50	1.5d	45.0	0.10	EB10	●		
38.10	1.50	1.5d	57.0	0.12	EB15	●		
38.00	2.00	1.5d	50.0	0.13	EB15	●	●	
38.00	2.00	1.5d	57.0	0.16	EB15	●	●	
40.00	1.50	1.5d	60.0	0.14	EB15	●		
40.00	2.00	1.5d	60.0	0.18	EB15	●	●	

● =lager

Mått och ritningar är vägledande



Böj 90°, svetsad

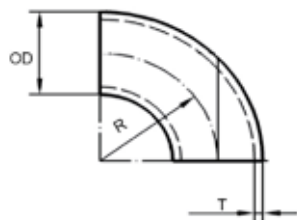
3D / 5D / 1.5d / 1.5ID / ID+100
EN 10204 3.1



OD mm	T mm	Typ	R mm	Kg / st	Artikel nummer	EN 1.4301	EN 1.4404	EN 1.4571	EN 1.4432
42.40	1.60	3D	48.0	0.12	EB10	●	●		
42.40	2.00	3D	48.0	0.15	EB10	●	●	●	
42.40	2.00	5D	93.0	0.29	EB56	●			
42.40	2.60	3D	48.0	0.19	EB10	●	●		
42.40	3.00	3D	48.0	0.22	EB10	●			
42.40	3.20	3D	48.0	0.24	EB10	●	●		
44.50	2.00	1.5ID	51.0	0.19	EB20	●	●		
48.30	1.60	3D	57.0	0.16	EB10	●	●		
48.30	2.00	3D	57.0	0.21	EB10	●	●	●	
48.30	2.00	5D	108.0	0.39	EB56	●	●		
48.30	2.60	3D	57.0	0.27	EB10	●	●	●	
48.30	3.00	3D	57.0	0.27	EB10	●	●		
48.30	3.20	3D	57.0	0.32	EB10	●	●	●	
50.00	1.50	1.5d	75.0	0.22	EB15	●	●		
50.00	2.00	1.5d	75.0	0.28	EB15	●	●		
50.80	1.50	1.5d	75.0	0.22	EB15	●	●		
50.80	2.00	1.5d	75.0	0.28	EB15	●	●		
53.00	1.50	1.5ID	75.0	0.16	EB20	●			
54.00	2.00	1.5ID	68.5	0.20	EB15	●	●		
54.00	2.00	1.5ID	75.0	0.21	EB20	●	●		●
57.00	2.00	1.5d	77.0	0.33	EB15	●			
57.00	3.00	1.5d	77.0	0.49	EB15	●	●		
60.30	1.60	3D	76.0	0.27	EB10	●	●		
60.30	2.00	3D	76.0	0.35	EB10	●	●	●	
60.30	2.00	5D	135.0	0.61	EB56	●	●		
60.30	2.60	3D	76.0	0.45	EB10	●	●	●	
60.30	3.00	3D	76.0	0.50	EB10	●	●	●	
60.30	3.60	3D	76.0	0.61	EB10	●	●	●	
63.50	1.50	1.5d	94.5	0.35	EB15	●			
63.50	2.00	1.5d	94.5	0.46	EB15	●			
70.00	2.00	1.5d	92.5	0.49	EB15	●	●		●
76.10	2.00	3D	95.0	0.55	EB10	●	●	●	
76.10	2.00	5D	175.0	1.00	EB56	●			
76.10	2.60	3D	95.0	0.71	EB10	●	●		
76.10	3.00	3D	95.0	0.79	EB10	●	●		
76.10	3.60	3D	95.0	0.99	EB10	●	●	●	
84.00	2.00	1.5ID	120.0	0.77	EB20	●	●		●
88.90	2.00	3D	114.0	0.79	EB10	●	●	●	
88.90	2.00	5D	205.0	1.20	EB56	●	●		
88.90	2.60	3D	114.0	1.01	EB10	●	●	●	
88.90	3.00	3D	114.0	1.17	EB10	●	●	●	
88.90	4.00	3D	114.0	1.53	EB10	●	●		
101.60	2.00	1.5d	133.0	1.04	EB15	●	●		
101.60	3.00	1.5d	133.0	1.55	EB15	●	●		
104.00	2.00	1.5ID	150.0	1.20	EB20	●	●		●
104.00	2.00	ID+100	200.0	1.60	EB25		●		
106.00	3.00	3D	150.0	1.80	EB20		●		

● =lager

Mått och ritningar är vägledande



Böj 90°, svetsad

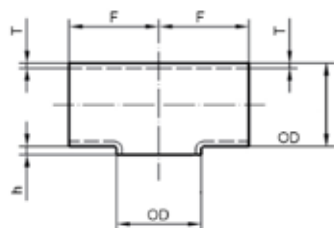
3D / 5D / 1.5d / 1.5ID / ID+100
EN 10204 3.1



OD mm	T mm	Typ	R mm	Kg / st	Artikel nummer	EN 1.4301	EN 1.4404	EN 1.4571	EN 1.4432
108.00	2.00	1.5d	142.0	1.18	EB15	●	●		
108.00	3.00	1.5d	142.0	1.76	EB15	●			
108.00	4.00	1.5d	142.0		EB15	●	●		
114.30	2.00	3D	152.0	1.35	EB10	●	●	●	
114.30	2.00	5D	270.0	2.30	EB56	●	●		
114.30	2.60	3D	152.0	1.75	EB10	●	●	●	
114.30	3.00	3D	152.0	2.01	EB10	●	●		
114.30	4.00	3D	152.0	2.65	EB10	●	●		
129.00	2.00	1.5ID	188.0	1.90	EB20	●	●		●
139.70	2.00	3D	190.0	0.50	EB10	●	●	●	
139.70	2.60	3D	190.0	2.68	EB10	●	●		
139.70	3.00	3D	190.0	3.08	EB10	●	●		
139.70	4.00	3D	190.0	4.08	EB10		●		
154.00	2.00	1.5ID	225.0	2.70	EB20	●	●		●
154.00	2.00	ID+100	250.0	3.10	EB25	●			
156.00	3.00	1.5ID	225.0	4.10	EB20	●	●		
168.30	2.00	3D	229.0	3.00	EB10	●	●	●	
168.30	2.60	3D	229.0	3.88	EB10	●	●		
168.30	3.00	3D	229.0	4.47	EB10	●	●	●	
168.30	4.00	3D	229.0	5.90	EB10	●	●		
204.00	2.00	1.5ID	300.0	4.80	EB20	●	●		●
206.00	3.00	1.5ID	300.0	7.20	EB20	●	●		
219.10	2.00	3D	305.0	5.21	EB10	●	●	●	
219.10	2.60	3D	305.0	6.75	EB10	●	●		
219.10	3.00	3D	305.0	7.78	EB10	●	●	●	
254.00	2.00	ID+100	350.0	6.94	EB25	●	●		●
254.00	2.00	1.5ID	375.0	7.40	EB20	●	●		●
256.00	3.00	ID+100	350.0	10.45	EB25	●	●		
256.00	3.00	1.5ID	375.0	11.00	EB20	●	●		
273.00	2.00	3D	381.0	8.10	EB10	●	●		
273.00	3.00	3D	381.0	12.14	EB10	●	●	●	
304.00	2.00	ID+100	400.0	9.52	EB25	●	●		●
304.00	2.00	1.5ID	450.0	10.70	EB20	●	●		●
306.00	3.00	ID+100	400.0	14.30	EB25	●	●		
306.00	3.00	1.5ID	450.0	16.50	EB20	●	●		
323.90	2.00	3D	457.0	11.54	EB10	●			
323.90	3.00	3D	457.0	17.30	EB10	●	●	●	
355.60	3.00	3D	533.0	22.22	EB10	●	●		●
356.00	3.00	ID+100	450.0	18.74	EB25	●	●		●
406.40	3.00	ID+100	500.0	23.78	EB25	●	●		●
406.40	3.00	3D	610.0	29.04	EB10	●	●		●
456.00	3.00	ID+100	550.0	29.40	EB25	●	●		
457.20	3.00	3D	686.0	36.76	EB10	●	●		
506.00	3.00	ID+100	600.0	35.61	EB25	●	●		●
508.00	3.00	3D	762.0	45.40	EB10	●	●		●
608.00	4.00	ID+100	700.0	66.00	EB25		●		
609.60	4.00	3D	919.0	87.01	EB10	●	●		

● =lager

Mått och ritningar är vägledande



T-rör, uppkragat, svetsat

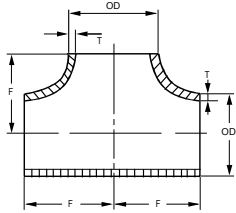
EN 10253
EN 10204 3.1



OD mm	T mm	Typ	F mm	h mm	Kg / st	Artikel nummer	EN 1.4301	EN 1.4404
17.20	1.60	Typ A	25.5	10	0.02	ET10		●
20.00	2.00	Typ A	25.0	11	0.04	ET15		●
21.30	2.00	Typ A	25.5	12	0.04	ET10	●	●
25.00	2.00	Typ A	29.0	14	0.05	ET15		●
26.90	2.00	Typ A	28.5	15	0.06	ET10	●	●
30.00	2.00	Typ A	38.0	17	0.06	ET15		●
33.70	2.00	Typ A	38.0	19	0.08	ET10	●	●
38.00	2.00	Typ A	47.5	21	0.13	ET15		●
42.40	2.00	Typ A	47.5	24	0.18	ET10	●	●
44.50	2.00	Typ A	47.5	26	0.14	ET15		●
48.30	2.00	Typ A	57.0	26	0.24	ET10	●	●
54.00	2.00	Typ A	57.0	30	0.22	ET15	●	●
60.30	2.00	Typ A	63.5	34	0.37	ET10	●	●
60.30	3.00	Typ A	63.5	34	0.51	ET10	●	●
76.10	2.00	Typ A	76.0	42	0.53	ET10	●	●
76.10	3.00	Typ A	76.0	42	0.75	ET10	●	●
84.00	2.00	Typ A	85.5	47	0.63	ET15	●	●
88.90	2.00	Typ A	85.5	49	0.68	ET10	●	●
88.90	3.00	Typ A	85.5	49	0.97	ET10	●	●
104.00	2.00	Typ A	105.0	56	0.95	ET15	●	●
114.30	2.00	Typ A	105.0	63	1.10	ET10	●	●
114.30	3.00	Typ A	105.0	63	1.46	ET10	●	●
129.00	2.00	Typ A	124.0	70	1.42	ET15	●	●
139.70	2.00	Typ A	124.0	76	1.51	ET10	●	●
139.70	3.00	Typ A	124.0	76	2.25	ET10	●	●
154.00	2.00	Typ A	143.0	84	2.03	ET15	●	●
156.00	3.00	Typ A	143.0	85	3.12	ET15		●
168.30	2.00	Typ A	142.0	92	2.13	ET10	●	●
168.30	3.00	Typ A	142.0	92	3.13	ET10	●	●
204.00	2.00	Typ A	178.0	110	3.79	ET15	●	●
206.00	3.00	Typ A	178.0	110	4.69	ET15	●	
219.10	2.00	Typ A	179.0	122	3.37	ET10	●	●
219.10	3.00	Typ A	179.0	122	4.91	ET10	●	●
254.00	2.00	Typ A	250.0	140	5.60	ET15	●	
256.00	3.00	Typ A	250.0	141	8.20	ET15		●
273.00	2.00	Typ A	216.0	151	5.07	ET10	●	●
273.00	3.00	Typ A	216.0	151	7.60	ET10	●	●

● =lager

Mått och ritningar är vägledande



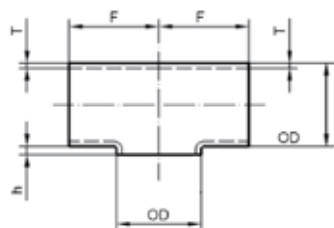
T-rör, pressat

EN 10253 typ A figur 4
EN 10204 3.1

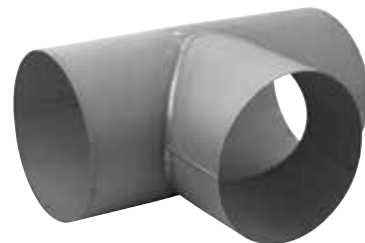


OD mm	T mm	Typ	F mm	Kg / st	Artikel nummer	EN 1.4301	EN 1.4404	EN 1.4432
17.20	1.60	Typ A	25.0	0.04	ET31		●	
21.30	2.00	Typ A	25.0	0.07	ET31	●	●	
25.00	2.00	Typ A	29.0	0.11	ET33	●		
26.90	2.00	Typ A	29.0	0.09	ET31	●	●	
30.00	2.00	Typ A	35.0	0.14	ET33	●	●	
33.70	2.00	Typ A	38.0	0.15	ET31	●	●	
42.40	2.00	Typ A	50.0	0.24	ET31	●	●	
44.50	2.00	Typ A	48.0	0.35	ET36	●	●	
48.30	2.00	Typ A	57.0	0.34	ET31	●	●	
54.00	2.00	Typ A	61.0	0.51	ET36		●	●
60.30	2.00	Typ A	64.0	0.50	ET31	●	●	
70.00	2.00	Typ A	73.0	0.79	ET33			●
76.10	2.00	Typ A	76.0	0.70	ET32	●	●	
84.00	2.00	Typ A	80.0	0.80	ET33		●	●
88.90	2.00	Typ A	86.0	0.90	ET32	●	●	
104.00	2.00	Typ A	90.0	1.30	ET33			●
114.30	2.00	Typ A	105.0	1.40	ET33	●	●	
129.00	2.00	Typ A	115.0	2.10	ET33	●	●	●
154.00	2.00	Typ A	135.0	3.10	ET33		●	●
206.00	3.00	Typ A	175.0	8.20	ET33	●	●	
256.00	3.00	Typ A	216.0	10.00	ET33		●	
306.00	3.00	Typ A	254.0	13.00	ET33		●	
355.60	3.00	Typ A	279.0	18.00	ET33			●
406.40	3.00	Typ A	305.0	28.00	ET33			●
508.00	3.00	Typ A	381.0	44.00	ET33			●

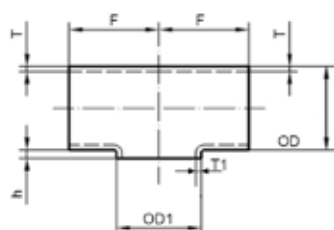
● =lager
Mått och ritningar är vägledande



T-rör, v-svetsat
EN 10253 typ A figur 7
EN 10204 3.1



OD mm	T mm	Typ	F mm	Kg / st	Artikel nummer	EN 1.4301	EN 1.4404
304.00	2.00	Typ A	300.0	10.41	ET37	●	●
306.00	3.00	Typ A	300.0	15.61	ET37	●	●
323.90	2.00	Typ A	254.0	12.35	ET38	●	●
323.90	3.00	Typ A	254.0	18.53	ET38	●	●
355.60	3.00	Typ A	279.0	22.16	ET38	●	●
406.40	3.00	Typ A	305.0	27.92	ET38	●	●



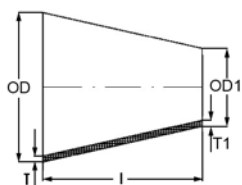
T-rör, förminskat, uppkragat, svetsat
EN 10253 typ A figur 6 (R)
EN 10204 3.1



OD mm	OD1 mm	T mm	T1 mm	Typ	F mm	h mm	Kg / st	Artikel nummer	EN 1.4404
33.70	21.30	2.00	2.00	Typ A	38	19	0.11	ET40	●
42.40	33.70	2.00	2.00	Typ A	48	24	0.18	ET40	●
48.30	21.30	2.00	2.00	Typ A	57	26	0.24	ET40	●
60.30	33.70	2.00	2.00	Typ A	64	41	1.50	ET40	●
60.30	42.40	2.00	2.00	Typ A	64	51	1.30	ET40	●
60.30	48.30	2.00	2.00	Typ A	64	41	1.50	ET40	●
76.10	42.40	2.00	2.00	Typ A	76	42	0.53	ET40	●
76.10	48.30	2.00	2.00	Typ A	76	42	0.53	ET40	●
76.10	60.30	2.00	2.00	Typ A	76	42	0.53	ET40	●
88.90	48.30	2.00	2.00	Typ A	86	49	0.68	ET40	●
88.90	60.30	2.00	2.00	Typ A	86	49	0.68	ET40	●
88.90	76.10	2.00	2.00	Typ A	86	49	0.68	ET40	●
114.30	60.30	2.00	2.00	Typ A	105	63	1.10	ET40	●
114.30	76.10	2.00	2.00	Typ A	105	63	1.10	ET40	●
114.30	88.90	2.00	2.00	Typ A	105	63	1.10	ET40	●
139.70	88.90	2.00	2.00	Typ A	124	76	1.51	ET40	●
139.70	114.30	2.00	2.00	Typ A	124	76	1.51	ET40	●
168.30	114.30	2.00	2.00	Typ A	143	92	2.13	ET40	●
168.30	114.30	3.00	3.00	Typ A	143	92	3.13	ET40	●
168.30	139.70	2.00	2.00	Typ A	143	92	2.13	ET40	●
204.00	129.00	2.00	2.00	Typ A	178	110	3.80	ET45	●
204.00	154.00	2.00	2.00	Typ A	178	110	3.80	ET45	●
219.10	168.30	2.00	2.00	Typ A	178	122	3.37	ET40	●

● =lager

Mått och ritningar är vägledande



Kona, koncentrisk, svetsad

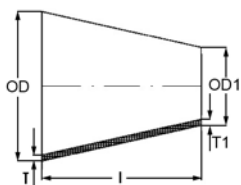
EN 10253 typ A figur 10 3x(D-d)

EN 10204 3.1



OD mm	OD1 mm	T mm	T1 mm	Typ	l mm	Kg / st	Artikel nummer	EN 1.4301	EN 1.4404	EN 1.4432
17.20	13.50	2.00	2.00	Typ A	11.10	0.007	ER10		●	
21.30	13.50	2.00	2.00	Typ A	23.40	0.018	ER10		●	
21.30	17.20	2.00	2.00	Typ A	12.30	0.011	ER10		●	
26.90	13.50	2.00	2.00	Typ A	40.20	0.037	ER10		●	
26.90	17.20	2.00	2.00	Typ A	29.10	0.029	ER10		●	
26.90	21.30	2.00	2.00	Typ A	16.80	0.019	ER10	●	●	
30.00	25.00	2.00	2.00	Typ A	38.00	0.049	ER11		●	
33.70	17.20	2.00	2.00	Typ A	38.00	0.045	ER10		●	
33.70	21.30	2.00	2.00	Typ A	37.20	0.051	ER10	●	●	
33.70	26.90	2.00	2.00	Typ A	20.40	0.029	ER10	●	●	
38.00	25.00	2.00	2.00	Typ A	39.00	0.058	ER11		●	
42.40	21.30	2.00	2.00	Typ A	63.30	0.095	ER10	●	●	
42.40	26.90	2.00	2.00	Typ A	46.50	0.076	ER10	●	●	
42.40	33.70	2.00	2.00	Typ A	26.10	0.047	ER10	●	●	
44.50	20.00	2.00	2.00	Typ A	73.50	0.111	ER11		●	
44.50	30.00	2.00	2.00	Typ A	43.50	0.077	ER11		●	
48.30	21.30	2.00	2.00	Typ A	81.00	0.051	ER10	●	●	
48.30	26.90	2.00	2.00	Typ A	64.20	0.114	ER10	●	●	
48.30	33.70	2.00	2.00	Typ A	43.80	0.086	ER10	●	●	
48.30	42.40	2.00	2.00	Typ A	17.70	0.038	ER10	●	●	
54.00	30.00	2.00	2.00	Typ A	72.00	0.144	ER11		●	
54.00	44.50	2.00	2.00	Typ A	28.50	0.067	ER11		●	
60.30	21.30	2.00	2.00	Typ A	117.00	0.227	ER10		●	
60.30	26.90	2.00	2.00	Typ A	100.20	0.209	ER10		●	
60.30	33.70	2.00	2.00	Typ A	79.80	0.180	ER10	●	●	
60.30	42.40	2.00	2.00	Typ A	53.70	0.133	ER10	●	●	
60.30	48.30	2.00	2.00	Typ A	36.00	0.094	ER10	●	●	
70.00	44.50	2.00	2.00	Typ A	76.50	0.212	ER11		●	
70.00	54.00	2.00	2.00	Typ A	48.00	0.144	ER11		●	●
76.10	33.70	2.00	2.00	Typ A	127.20	0.337	ER10		●	
76.10	42.40	2.00	2.00	Typ A	101.10	0.290	ER10		●	
76.10	48.30	2.00	2.00	Typ A	83.40	0.251	ER10	●	●	
76.10	60.30	2.00	2.00	Typ A	47.40	0.051	ER10	●	●	
76.10	60.30	3.00	3.00	Typ.A	47.40	0.232	ER10	●	●	
84.00	44.50	2.00	2.00	Typ A	118.50	0.369	ER11		●	
84.00	54.00	2.00	2.00	Typ A	90.00	0.302	ER11	●	●	●
84.00	70.00	2.00	2.00	Typ A	42.00	0.158	ER11		●	

● =lager
Mått och ritningar är vägledande



Kona, koncentrisk, svetsad

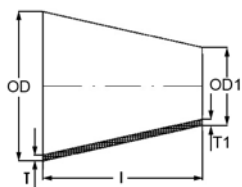
EN 10253 typ A figur 10 3x(D-d)
EN 10204 3.1



OD mm	OD1 mm	T mm	T1 mm	Typ	l mm	Kg / st	Artikel nummer	EN 1.4301	EN 1.4404	EN 1.4432
88.90	33.70	2.00	2.00	Typ A	165.60	0.492	ER10		●	
88.90	42.40	2.00	2.00	Typ A	139.50	0.445	ER10		●	
88.90	48.30	2.00	2.00	Typ A	121.80	0.406	ER10	●	●	
88.90	60.30	2.00	2.00	Typ A	85.80	0.312	ER10	●	●	
88.90	60.30	3.00	3.00	Typ A	85.80	0.461	ER10	●	●	
88.90	76.10	2.00	2.00	Typ A	38.40	0.051	ER10	●	●	
88.90	76.10	3.00	3.00	Typ A	38.40	0.229	ER10		●	
104.00	54.00	2.00	2.00	Typ A	150.00	0.578	ER11	●	●	
104.00	70.00	2.00	2.00	Typ A	102.00	0.434	ER11		●	●
104.00	76.10	2.00	2.00	Typ A	83.70	0.369	ER11	●	●	
104.00	84.00	2.00	2.00	Typ A	60.00	0.276	ER11	●	●	
114.30	48.30	2.00	2.00	Typ A	198.00	0.786	ER10		●	
114.30	60.30	2.00	2.00	Typ A	162.00	0.692	ER10	●	●	
114.30	60.30	3.00	3.00	Typ A	162.00	1.026	ER10	●	●	
114.30	76.10	2.00	2.00	Typ A	114.60	0.535	ER10	●	●	
114.30	76.10	3.00	3.00	Typ A	114.60	0.794	ER10	●	●	
114.30	88.90	2.00	2.00	Typ A	76.20	0.380	ER10	●	●	
114.30	88.90	3.00	3.00	Typ A	76.20	0.564	ER10	●	●	
129.00	84.00	2.00	2.00	Typ A	135.00	0.707	ER11		●	●
129.00	104.00	2.00	2.00	Typ A	75.00	0.430	ER11	●	●	
139.70	60.30	2.00	2.00	Typ A	238.20	1.169	ER10		●	
139.70	76.10	2.00	2.00	Typ A	190.80	1.012	ER10		●	
139.70	88.90	2.00	2.00	Typ A	152.40	0.857	ER10	●	●	
139.70	88.90	3.00	3.00	Typ A	152.40	1.274	ER10		●	
139.70	114.30	2.00	2.00	Typ A	76.20	0.477	ER10	●	●	
139.70	114.30	3.00	3.00	Typ A	76.20	0.710	ER10		●	
154.00	84.00	2.00	2.00	Typ A	210.00	1.230	ER11		●	
154.00	104.00	2.00	2.00	Typ A	150.00	0.954	ER11	●	●	●
154.00	129.00	2.00	2.00	Typ A	75.00	0.051	ER11	●	●	
168.30	76.10	2.00	2.00	Typ A	276.60	1.665	ER10		●	
168.30	88.90	2.00	2.00	Typ A	238.20	1.510	ER10	●	●	
168.30	88.90	3.00	3.00	Typ A	140.00	1.321	ER10		●	
168.30	114.30	2.00	2.00	Typ.A	162.00	1.130	ER10	●	●	
168.30	114.30	3.00	3.00	Typ A	162.00	1.683	ER10	●	●	
168.30	139.70	2.00	2.00	Typ A	85.80	0.051	ER10	●	●	
168.30	139.70	3.00	3.00	Typ A	85.80	0.973	ER10	●	●	

● =lager

Mått och ritningar är vägledande



Kona, koncentrisk, svetsad

EN 10253-4 typ A figur 10 3x(D-d)

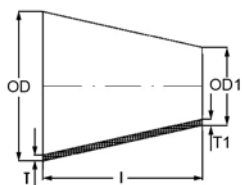
EN 10204 3.1



OD mm	OD1 mm	T mm	T1 mm	Typ	l mm	Kg / st	Artikel nummer	EN 1.4301	EN 1.4404	EN 1.4432
204.00	104.00	2.00	2.00	Typ A	300.00	2.284	ER11	●	●	
204.00	129.00	2.00	2.00	Typ A	225.00	1.854	ER11	●	●	●
204.00	154.00	2.00	2.00	Typ A	150.00	1.330	ER11	●	●	
206.00	156.00	3.00	3.00	Typ A	150.00	2.006	ER11	●	●	
219.10	114.30	2.00	2.00	Typ A	314.40	2.593	ER10	●	●	
219.10	114.30	3.00	3.00	Typ A	314.40	3.866	ER10	●	●	
219.10	139.70	2.00	2.00	Typ A	238.20	2.116	ER10	●	●	
219.10	139.70	3.00	3.00	Typ A	238.20	0.051	ER10		●	
219.10	168.30	2.00	2.00	Typ A	152.40	1.463	ER10	●	●	
219.10	168.30	3.00	3.00	Typ A	152.40	2.183	ER10	●	●	
254.00	154.00	2.00	2.00	Typ A	300.00	3.035	ER11	●	●	●
254.00	204.00	2.00	2.00	Typ A	150.00	1.705	ER11	●	●	
256.00	206.00	3.00	3.00	Typ A	150.00	2.569	ER11	●		
273.00	168.30	2.00	2.00	Typ A	314.10	3.439	ER10	●	●	
273.00	168.30	3.00	3.00	Typ A	314.10	5.135	ER10	●	●	
273.00	219.10	2.00	2.00	Typ A	161.70	1.976	ER10	●	●	
273.00	219.10	3.00	3.00	Typ A	161.70	2.952	ER10	●	●	
304.00	204.00	2.00	2.00	Typ A	300.00	3.786	ER11	●	●	●
304.00	254.00	2.00	2.00	Typ A	150.00	2.081	ER11	●	●	
306.00	206.00	3.00	3.00	Typ A	300.00	5.702	ER11	●	●	
306.00	256.00	3.00	3.00	Typ A	300.00	6.353	ER11		●	
323.90	219.10	2.00	2.00	Typ A	314.40	4.243	ER10	●	●	
323.90	219.10	3.00	3.00	Typ A	314.40	6.341	ER10	●	●	
323.90	273.00	2.00	2.00	Typ A	152.70	2.267	ER10	●	●	
323.90	273.00	3.00	3.00	Typ A	152.70	3.389	ER10	●	●	
355.60	254.00	3.00	3.00	Typ A	300.00	6.92	ER11			●
355.60	323.90	3.00	3.00	Typ A	95.10	2.440	ER10	●	●	
355.60	323.90	4.00	4.00	Typ A	95.10	3.250	ER10		●	
406.00	304.00	3.00	3.00	Typ A	300.00	8.06	ER11			●
406.40	323.90	3.00	3.00	Typ A	247.50	6.733	ER10	●	●	
406.40	323.90	4.00	4.00	Typ A	247.50	8.953	ER10		●	
406.40	355.60	3.00	3.00	Typ A	152.40	4.327	ER10		●	
406.40	355.60	4.00	4.00	Typ A	152.40	5.755	ER10		●	
457.20	406.40	3.00	3.00	Typ A	152.40	4.909	ER10		●	
508.00	355.60	3.00	3.00	Typ A	508.00	14.70	ER11			●
508.00	406.40	3.00	3.00	Typ A	304.80	10.400	ER10	●		
508.00	457.20	3.00	3.00	Typ A	152.40	5.491	ER10		●	
609.60	406.40	3.00	3.00	Typ A	609.60	23.126	ER10	●		

● =lager

Mått och ritningar är vägledande



Kona, koncentrisk, svetsad

EN 10253-4 figur 8

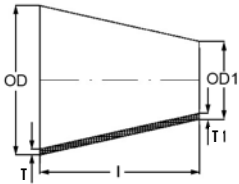
EN 10204 3.1



OD mm	OD1 mm	T mm	T1 mm	Typ	l mm	Kg / st	Artikel nummer	EN 1.4301	EN 1.4404
26.90	21.30	2.00	2.00	Typ A	38.00	0.042	ER30	●	●
26.90	21.30	2.60	2.60	Typ A	38.00	0.042	ER30	●	●
33.70	21.30	2.00	2.00	Typ A	51.00	0.065	ER30	●	●
33.70	21.30	2.60	2.60	Typ A	51.00	0.083	ER30	●	●
33.70	26.90	2.00	2.00	Typ A	51.00	0.072	ER30	●	●
33.70	26.90	2.60	2.60	Typ A	51.00	0.092	ER30	●	●
42.40	21.30	2.00	2.00	Typ A	51.00	0.076	ER30	●	●
42.40	26.90	2.00	2.00	Typ A	51.00			●	
42.40	26.90	2.60	2.60	Typ A	51.00	0.106	ER30	●	
42.40	33.70	2.00	2.00	Typ A	51.00	0.092	ER30	●	●
42.40	33.70	2.60	2.60	Typ A	51.00	0.118	ER30	●	●
48.30	21.30	2.00	2.00	Typ A	64.00	0.105	ER30	●	
48.30	26.90	2.00	2.00	Typ A	64.00	0.114	ER30	●	●
48.30	26.90	2.60	2.60	Typ A	64.00	0.146	ER30	●	
48.30	33.70	2.00	2.00	Typ A	64.00	0.125	ER30	●	●
48.30	33.70	2.60	2.60	Typ A	64.00	0.160	ER30	●	●
48.30	33.70	3.20	3.20	Typ A	64.00	0.194	ER30		●
48.30	42.40	2.00	2.00	Typ A	64.00	0.139	ER30	●	●
48.30	42.40	2.60	2.60	Typ A	64.00	0.051	ER30		●
60.30	21.30	2.00	2.00	Typ A	76.00	0.148	ER30	●	
60.30	21.30	2.60	2.60	Typ A	76.00	0.189	ER30	●	
60.30	26.90	2.00	2.00	Typ A	76.00	0.158	ER30	●	
60.30	33.70	2.00	2.00	Typ A	76.00	0.171	ER30	●	●
60.30	33.70	2.60	2.60	Typ A	76.00	0.051	ER30	●	●
60.30	42.40	2.00	2.00	Typ A	76.00	0.188	ER30	●	●
60.30	42.40	2.60	2.60	Typ A	76.00	0.241	ER30	●	●
60.30	48.30	2.00	2.00	Typ A	76.00	0.199	ER30	●	●
60.30	48.30	2.60	2.60	Typ A	76.00	0.256	ER30	●	●
76.10	60.30	3.00	3.00	Typ A	89.00	0.436	ER30	●	●
88.90	60.30	3.00	3.00	Typ A	89.00	0.479	ER30	●	●
88.90	76.10	3.00	3.00	Typ A	89.00	0.532	ER30	●	●
114.30	60.30	3.00	3.00	Typ A	102.00	0.051	ER30	●	●
114.30	76.10	3.00	3.00	Typ A	102.00	0.706	ER30	●	●
114.30	88.90	3.00	3.00	Typ A	102.00	0.755	ER30	●	●
139.70	76.10	3.00	3.00	Typ A	127.00	1.001	ER30		●
139.70	88.90	3.00	3.00	Typ A	127.00	1.062	ER30	●	●
139.70	114.30	3.00	3.00	Typ A	127.00	1.183	ER30	●	●
168.30	88.90	3.00	3.00	Typ A	127.00	1.198	ER30	●	
168.30	114.30	3.00	3.00	Typ A	140.00	1.454	ER30	●	●
219.10	139.70	3.00	3.00	Typ A	178.00	2.359	ER30		●
219.10	168.30	3.00	3.00	Typ A	178.00	2.550	ER30	●	●

● =lager

Mått och ritningar är vägledande



Kona, koncentrisk, svetsad

EN 10253 typ A figur 11 3x(D-d)

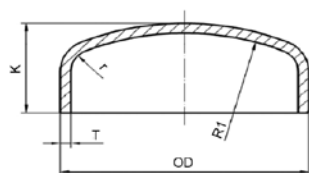
EN 10204 3.1



OD mm	OD1 mm	T mm	T1 mm	Typ	l mm	Kg / st	Artikel nummer	EN 1.4404
33.70	21.30	2.00	2.00	Typ A	37.00	0.051	ER13	●
33.70	26.90	2.00	2.00	Typ A	20.00	0.031	ER13	●
42.40	26.90	2.00	2.00	Typ A	47.00	0.080	ER13	●
42.40	33.70	2.00	2.00	Typ A	47.00	0.080	ER13	●
48.30	26.90	2.00	2.00	Typ A	64.00	0.121	ER13	●
48.30	33.70	2.00	2.00	Typ A	44.00	0.090	ER13	●
48.30	42.40	2.00	2.00	Typ A	18.00	0.040	ER13	●
60.30	26.90	2.00	2.00	Typ A	100.00	0.219	ER13	●
60.30	33.70	2.00	2.00	Typ A	80.00	0.188	ER13	●
60.30	42.40	2.00	2.00	Typ A	54.00	0.139	ER13	●
60.30	48.30	2.00	2.00	Typ A	36.00	0.098	ER13	●
76.10	42.40	2.00	2.00	Typ A	101.00	0.301	ER13	●
76.10	48.30	2.00	2.00	Typ A	83.00	0.261	ER13	●
76.10	60.30	2.00	2.00	Typ A	47.00	0.162	ER13	●
88.90	42.40	2.00	2.00	Typ A	140.00	0.458	ER13	●
88.90	48.30	2.00	2.00	Typ A	122.00	0.420	ER13	●
88.90	60.30	2.00	2.00	Typ A	86.00	0.322	ER13	●
88.90	76.10	2.00	2.00	Typ A	38.00	0.159	ER13	●
104.00	84.00	2.00	2.00	Typ A	60.00	0.283	ER14	●
114.30	60.30	2.00	2.00	Typ A	162.00	0.711	ER13	●
114.30	60.30	3.00	3.00	Typ A	162.00	1.066	ER13	●
114.30	76.10	2.00	2.00	Typ A	115.00	0.555	ER13	●
114.30	88.90	2.00	2.00	Typ A	76.00	0.389	ER13	●
114.30	88.90	3.00	3.00	Typ A	76.00	0.583	ER13	●
129.00	84.00	2.00	2.00	Typ A	135.00	0.722	ER14	●
129.00	104.00	2.00	2.00	Typ A	75.00	0.439	ER14	●
139.70	88.90	2.00	2.00	Typ A	152.00	0.875	ER13	●
139.70	114.30	3.00	3.00	Typ A	76.00	0.729	ER13	●
154.00	84.00	2.00	2.00	Typ A	210.00	1.255	ER14	●
154.00	104.00	2.00	2.00	Typ A	150.00	0.972	ER14	●
154.00	129.00	2.00	2.00	Typ A	75.00	0.533	ER14	●
168.30	88.90	2.00	2.00	Typ A	238.00	1.539	ER13	●
168.30	114.30	2.00	2.00	Typ A	162.00	1.150	ER13	●
168.30	114.30	3.00	3.00	Typ A	162.00	1.725	ER13	●
204.00	104.00	2.00	2.00	Typ A	300.00	2.321	ER14	●
204.00	129.00	2.00	2.00	Typ A	225.00	1.882	ER14	●
204.00	154.00	2.00	2.00	Typ A	150.00	1.349	ER14	●
219.10	114.30	3.00	3.00	Typ A	314.00	3.950	ER13	●
219.10	139.70	2.00	2.00	Typ A	238.00	2.147	ER13	●
219.10	168.30	3.00	3.00	Typ A	152.00	2.225	ER13	●

● =lager

Mått och ritningar är vägledande



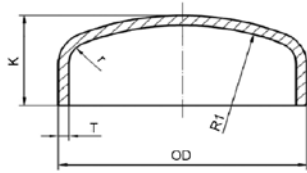
Gavel
ISO, Metrisk
EN 10204 3.1



OD mm	T mm	Typ	K mm	r mm	R1 mm	Kg / st	Artikel nummer	EN 1.4301	EN 1.4404
17.20	2.00	ISO	11.5	1.3	13.2	0.090	EE10		●
21.30	2.00	ISO	14.5	1.7	17.3	0.015	EE10	●	●
25.00	2.00	Metrisk	12.0	2.1	21.0	0.016	EE15		●
26.90	2.00	ISO	10.5	2.3	22.9	0.015	EE10	●	●
28.00	2.00	Metrisk	12.0	2.4	24.0	0.022	EE15		●
30.00	2.00	Metrisk	12.0	2.6	26.0	0.024	EE15		●
33.70	2.00	ISO	12.5	3.0	29.7	0.023	EE10	●	●
33.70	3.00	ISO	14.5	2.8	27.7	0.035	EE10		●
38.00	2.00	Metrisk	15.0	3.4	34.0	0.034	EE15		●
40.00	2.00	Metrisk	14.0	3.6	36.0	0.033	EE15		●
42.40	2.00	ISO	17.0	3.8	38.4	0.042	EE10	●	●
42.40	3.00	ISO	18.0	3.6	36.4	0.063	EE10		●
48.30	2.00	ISO	17.0	4.4	44.3	0.050	EE10	●	●
50.80	2.00	Metrisk	19.0	4.7	46.8	0.055	EE15	●	●
54.00	2.00	Metrisk	19.0	5.0	50.0	0.058	EE15	●	●
60.30	2.00	ISO	20.0	5.6	56.3	0.076	EE10	●	●
60.30	3.00	ISO	22.0	5.4	54.3	0.115	EE10	●	●
63.50	2.00	Metrisk	19.0	6.0	59.5	0.078	EE15		●
70.00	2.00	Metrisk	21.0	6.6	66.0	0.097	EE15	●	●
76.10	2.00	ISO	27.0	7.2	72.1	0.131	EE10	●	●
76.10	3.00	ISO	29.0	7.0	70.1	0.196	EE10	●	●
84.00	2.00	Metrisk	23.0	8.0	80.0	0.131	EE15	●	●
88.90	2.00	ISO	29.0	8.5	84.9	0.166	EE10	●	●
88.90	3.00	ISO	29.0	8.3	82.9	0.249	EE10	●	●
101.60	2.00	Metrisk	25.5	9.8	97.6	0.187	EE16	●	●
101.60	3.00	Metrisk	27.0	9.6	95.6	0.280	EE16	●	●
104.00	2.00	Metrisk	24.0	10.0	100.0	0.187	EE15	●	●
106.00	3.00	Metrisk	25.0	10.0	100.0	0.280	EE15		●
108.00	2.00	Metrisk	32.0	10.4	104.0	0.246	EE16	●	●
114.30	2.00	ISO	32.0	11.0	110.3	0.246	EE10	●	●
114.30	3.00	ISO	32.0	10.8	108.3	0.369	EE10	●	●
129.00	2.00	Metrisk	34.0	12.5	125.0	0.314	EE15	●	●
139.70	2.00	ISO	35.0	13.6	135.7	0.372	EE10	●	●
139.70	3.00	ISO	36.0	13.4	133.7	0.565	EE10	●	●
139.70	4.00	ISO	36.0	13.2	131.7	0.709	EE10		●
154.00	2.00	Metrisk	41.0	15.0	150.0	0.444	EE15	●	●
156.00	3.00	Metrisk	42.0	15.0	150.0	0.820	EE15		●
159.00	4.00	Metrisk	42.0	15.1	151.0	1.150	EE16		●
168.30	2.00	ISO	40.0	16.4	164.3	0.518	EE10	●	●
168.30	3.00	ISO	43.0	16.2	162.3	0.776	EE10	●	●
204.00	2.00	Metrisk	50.0	20.0	200.0	0.754	EE15	●	●
206.00	3.00	Metrisk	50.0	20.0	200.0	1.130	EE15		●
219.10	2.00	ISO	50.0	21.5	215.1	0.849	EE10	●	●
219.10	3.00	ISO	51.0	21.3	213.1	1.274	EE10	●	●
254.00	2.00	Metrisk	55.0	25.0	250.0	1.078	EE15	●	●
256.00	3.00	Metrisk	55.0	25.0	250.0	1.620	EE15		●
273.00	2.00	ISO	63.0	26.9	269.0	1.310	EE10	●	●

● =lager

Mått och ritningar är vägledande

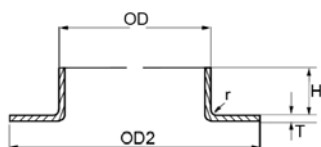


Gavel
ISO, Metrisk
EN 10204 3.1



OD mm	T mm	Typ	K mm	r mm	R1 mm	Kg / st	Artikel nummer	EN 1.4301	EN 1.4404
273.00	3.00	ISO	62.0	26.7	267.0	1.966	EE10	●	●
273.00	4.00	ISO	62.0	26.5	265.0	3.621	EE10		●
304.00	2.00	Metrisk	68.0	30.0	300.0	1.646	EE15	●	●
306.00	3.00	Metrisk	70.0	30.0	300.0	2.470	EE15	●	●
323.90	2.00	ISO	72.0	32.0	319.9	1.814	EE10	●	●
323.90	3.00	ISO	72.0	31.8	317.9	2.720	EE10	●	●
323.90	4.00	ISO	72.0	31.6	315.9	3.627	EE10		●
355.60	3.00	ISO	89.0	35.0	349.6	3.516	EE10	●	●
355.60	4.00	ISO	89.0	34.8	347.6	5.315	EE10		●
406.40	3.00	ISO	98.0	40.0	400.4	4.523	EE10	●	●
457.20	3.00	ISO	107.0	45.1	451.2	5.494	EE10	●	●
508.00	3.00	ISO	120.0	50.2	502.0	6.558	EE10	●	●
609.60	3.00	ISO	140.0	60.4	603.6	9.232	EE10	●	●

● =lager
Mått och ritningar är vägledande



Svetskrage, DIN 2642

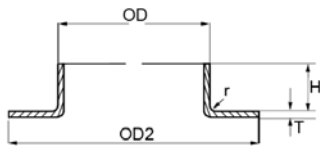
ISO, Metrisk
EN 10204 3.1



OD mm	T mm	Typ	OD2 mm	H mm	r mm	Kg / st	Artikel nummer	EN 1.4301	EN 1.4404
17.20	2.00	ISO	42	6.0	3.00	0.021	EC11		●
21.30	2.00	ISO	47	6.0	3.00	0.026	EC11	●	●
21.30	3.00	ISO	47	6.0	3.00	0.032	EC11		●
25.00	2.00	Metrisk	58	7.0	3.00	0.034	EC15		●
26.90	2.00	ISO	58	8.0	3.00	0.039	EC11	●	●
26.90	3.00	ISO	58	8.0	3.00	0.058	EC11		●
28.00	2.00	Metrisk	68	8.0	3.00	0.048	EC15	●	●
30.00	2.00	Metrisk	68	8.0	3.00	0.054	EC15		●
32.00	2.00	Metrisk	68	9.0	3.00	0.061	EC15	●	●
33.70	2.00	ISO	68	9.0	3.00	0.051	EC11	●	●
33.70	3.00	ISO	68	9.0	3.00	0.077	EC11	●	●
38.00	2.00	Metrisk	78	10.0	3.00	0.067	EC15	●	●
40.00	2.00	Metrisk		10.0		0.069	EC15	●	●
42.40	2.00	ISO	78	10.0	3.00	0.101	EC11	●	●
42.40	3.00	ISO	78	10.0	3.00	0.090	EC11	●	●
44.50	2.00	Metrisk	90	10.0	3.00	0.087	EC15		●
48.30	2.00	ISO	88	10.0	3.00	0.082	EC11	●	●
48.30	3.00	ISO	88	10.0	3.00	0.123	EC11	●	●
50.80	2.00	Metrisk	102	11.0	3.00	0.100	EC15		●
54.00	2.00	Metrisk	102	12.0	3.00	0.114	EC15	●	●
60.30	2.00	ISO	102	12.0	3.00	0.107	EC11	●	●
60.30	3.00	ISO	102	12.0	3.00	0.161	EC11	●	●
63.50	2.00	Metrisk	115	13.0	3.00	0.123	EC15		●
70.00	2.00	Metrisk	122	12.0	2.00	0.154	EC15	●	●
71.00	3.00	Metrisk	122	12.0	3.00	0.231	EC15		●
76.10	2.00	ISO	122	12.0	3.00	0.145	EC11	●	●
76.10	3.00	ISO	122	12.0	3.00	0.217	EC11	●	●
76.10	4.00	ISO	122	12.0	3.00	0.289	EC11		●
84.00	2.00	Metrisk	138	13.0	3.00	0.186	EC15	●	●
86.00	3.00	Metrisk	138	15.0	3.00	0.279	EC15	●	●
88.90	2.00	ISO	133	13.0	3.00	0.164	EC11	●	●
88.90	3.00	ISO	133	13.0	3.00	0.277	EC11	●	●
88.90	4.00	ISO	139	12.0	3.00	0.369	EC11		●
101.60	2.00	Metrisk	150	14.0	3.00	0.206	EC16	●	●
101.60	3.00	Metrisk	150	14.0	3.00	0.309	EC16		●
104.00	2.00	Metrisk	158	16.0	3.00	0.237	EC15	●	●
106.00	3.00	Metrisk	158	16.0	3.00	0.356	EC15	●	●
108.00	4.00	Metrisk	158	14.0	4.00	0.428	EC16		●
114.30	2.00	ISO	158	14.0	3.00	0.214	EC11	●	●
114.30	3.00	ISO	158	14.0	4.00	0.321	EC11	●	●
114.30	4.00	ISO	158	14.0	5.00		EC11		●
129.00	2.00	Metrisk	188	15.0	3.00	0.313	EC15	●	●
131.00	3.00	Metrisk	188	20.0	4.00	0.470	EC15	●	●
139.70	2.00	ISO	184	15.0	4.00	0.259	EC11	●	●
139.70	3.00	ISO	184	15.0	4.00	0.417	EC11	●	●
154.00	2.00	Metrisk	212	19.0	3.00	0.378	EC15	●	●
156.00	3.00	Metrisk	212	20.0	4.00	0.566	EC15	●	●

● =lager

Mått och ritningar är vägledande



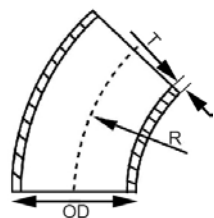
Svetskrage, DIN 2642

ISO, Metrisk
EN 10204 3.1

OD mm	T mm	Typ	OD2 mm	H mm	r mm	Kg / st	Artikel nummer	EN 1.4301	EN 1.4404
159.00	4.00	Metrisk	212	18.0	4.00	0.637	EC16	●	
168.30	2.00	ISO	212	18.0	4.00	0.318	EC11	●	●
168.30	3.00	ISO	212	18.0	4.00	0.477	EC11	●	●
168.30	4.00	ISO	212	18.0	4.00	0.637	EC10	●	
204.00	2.00	Metrisk	268	21.0	4.00	0.543	EC15	●	●
206.00	3.00	Metrisk	268	25.0	4.00	0.815	EC15	●	●
219.10	2.00	ISO	268	22.0	5.00	0.458	EC11	●	●
219.10	3.00	ISO	268	22.0	5.00	0.708	EC11	●	●
219.10	4.00	ISO	268	22	5.00		EC11	●	
254.00	2.00	Metrisk	320	24.0	5.00	0.711	EC15	●	●
256.00	3.00	Metrisk	320	25.0	5.00	1.066	EC15	●	●
273.00	2.00	ISO	320	23.0	5.00	0.532	EC11	●	●
273.00	3.00	ISO	320	23.0	5.00	0.835	EC11	●	●
273.00	4.00	ISO	320	23.0	5.00	1.113	EC10	●	●
304.00	2.00	Metrisk	370	19.0	5.00	0.804	EC15	●	●
306.00	3.00	Metrisk	370	21.0	5.00	1.206	EC15	●	●
323.90	2.00	ISO	370	19.0	5.00	0.650	EC10	●	●
323.90	3.00	ISO	370	19.0	5.00	0.962	EC10	●	●
323.90	4.00	ISO	370	19.0	5.00	1.282	EC10	●	●
355.60	3.00	ISO	430	21.0	5.00	1.518	EC10	●	●
406.40	3.00	ISO	482	21.0	5.00	1.770	EC10	●	●
406.40	4.00	ISO	482	21.0	5.00	2.360	EC10	●	●
457.20	3.00	ISO	532	25.0	5.00	2.087	EC10	●	●
457.20	4.00	ISO	532	25.0	5.00	2.873	EC10	●	
508.00	3.00	ISO	587	27.0	5.00	2.286	EC10	●	●
508.00	4.00	ISO	587	27.0	5.00	3.048	EC10	●	●
609.60	3.00	ISO	685	26.0	5.00	2.719	EC10	●	●
609.60	4.00	ISO	685	26.0	5.00	3.625	EC10	●	

● =lager

Mått och ritningar är vägledande



Böj 45°, stor radie

ASTM-A 403 ASME B16.9

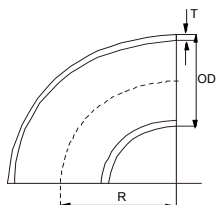
EN 10204 3.1



OD mm	T mm	INCH-GAS-SCH mm	R mm	Kg / st	Artikel nummer		ASTM 304/L		ASTM 316/L	
					Svetsad	Sömlös	Svetsad	Sömlös	Svetsad	Sömlös
21.34	2.11	1/2" SCH 10S	38.1	0.030	AB30	AB40		●		●
21.34	2.77	1/2" SCH 40S	38.1	0.040	AB30	AB40		●		●
21.34	3.73	1/2" SCH 80S	38.1	0.050		AB40				●
26.67	2.11	3/4" SCH 10S	28.6	0.040	AB30	AB40		●		●
26.67	2.87	3/4" SCH 40S	28.6	0.050	AB30	AB40		●		●
26.67	3.91	3/4" SCH 80S	28.6	0.060		AB40				●
33.40	2.77	1" SCH 10S	25.4	0.070	AB30	AB40		●		●
33.40	3.38	1" SCH 40S	38.1	0.080	AB30	AB40		●		●
33.40	4.55	1" SCH 80S	38.1	0.100		AB40				●
42.16	2.77	1.1/4" SCH 10S	47.6	0.100	AB30	AB40		●		●
42.16	3.56	1.1/4" SCH 40S	47.6	0.130	AB30	AB40		●		●
42.16	4.85	1.1/4" SCH 80S	47.6	0.170		AB40				●
48.26	2.77	1.1/2" SCH 10S	56.2	0.150	AB30	AB40		●		●
48.26	3.68	1.1/2" SCH 40S	56.2	0.200	AB30	AB40		●		●
60.30	2.77	2" SCH 10S	76.2	0.250	AB30	AB40		●		●
60.30	3.91	2" SCH 40S	76.2	0.350	AB30	AB40		●		●
73.03	3.05	2.1/2" SCH 10S	94.5	0.395	AB30	AB40		●		●
73.03	5.16	2.1/2" SCH 40S	94.5	0.645	AB30	AB40		●		●
88.90	3.05	3" SCH 10S	114.2	0.590	AB30	AB40		●		●
88.90	5.49	3" SCH 40S	114.2	1.070	AB30	AB40		●		●
114.30	3.05	4" SCH 10S	152.4	1.020	AB30	AB40		●		●
114.30	6.02	4" SCH 40S	152.4	2.015	AB30	AB40		●		●
168.28	3.40	6" SCH 10S	228.6	2.515	AB30	AB40	●		●	
168.28	7.11	6" SCH 40S	228.6	5.450	AB30	AB40	●		●	
219.08	3.76	8" SCH 10S	304.8	4.250	AB30	AB40	●		●	
219.08	8.18	8" SCH 40S	304.8	7.000	AB30	AB40	●		●	
273.05	4.19	10" SCH 10S	381.0	8.450	AB30	AB40	●		●	
273.05	9.27	10" SCH 40S	381.0	19.300	AB30	AB40	●		●	
323.85	4.57	12" SCH 10S	457.0	13.150	AB30	AB40	●		●	
323.85	9.53	12" SCH 40S	457.0	29.200	AB30	AB40	●		●	
355.60	4.78	14" SCH 10S	533.5	17.550	AB31	AB40	●			
355.60	9.53	14" SCH 40S	533.5	35.150	AB31	AB40	●			
406.40	4.78	16" SCH 10S	609.5	23.000	AB31	AB40	●			
406.40	9.53	16" SCH 40S	609.5	45.800	AB31	AB40	●			

● =lager

Mått och ritningar är vägledande



Böj 90°, stor radie

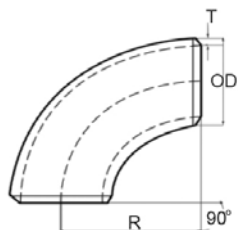
ASTM-A 403 ASME B16.9

EN 10204 3.1



D mm	T mm	INCH-GAS-SCH mm	R mm	Kg / st	Artikel nummer		ASTM 304/L		ASTM 316/L	
					Svetsad	Sömlös	Svetsad	Sömlös	Svetsad	Sömlös
21.34	2.11	1/2" SCH 10S	38.1	0.11	AB35	AB45	●	●	●	●
21.34	2.77	1/2" SCH 40S	38.1	0.14	AB35	AB45	●	●	●	●
21.34	3.73	1/2" SCH 80S	38.1	0.18		AB45		●		●
26.67	2.11	3/4" SCH 10S	38.1	0.07	AB35	AB45	●	●	●	●
26.67	2.87	3/4" SCH 40S	38.1	0.08	AB35	AB45	●	●	●	●
26.67	3.91	3/4" SCH 80S	38.1	0.10		AB45		●		●
33.40	2.77	1" SCH 10S	38.1	0.14	AB35	AB45	●	●	●	●
33.40	3.38	1" SCH 40S	38.1	0.15	AB35	AB45	●	●	●	●
33.40	4.55	1" SCH 80S	38.1	0.19		AB45		●		●
42.16	2.77	1.1/4" SCH 10S	47.6	0.23	AB35	AB45	●	●	●	●
42.16	3.56	1.1/4" SCH 40S	47.6	0.26	AB35	AB45	●	●	●	●
42.16	4.85	1.1/4" SCH 80S	47.6	0.35		AB45		●		●
48.26	2.77	1.1/2" SCH 10S	57.2	0.30	AB35	AB45	●	●	●	●
48.26	3.68	1.1/2" SCH 40S	57.2	0.40	AB35	AB45	●	●	●	●
48.26	5.08	1.1/2" SCH 80S	57.2	0.55		AB45		●		●
60.33	2.77	2" SCH 10S	76.2	0.50	AB35	AB45	●	●	●	●
60.33	3.91	2" SCH 40S	76.2	0.70	AB35	AB45	●	●	●	●
60.33	5.54	2" SCH 80S	76.2	0.89		AB45		●		●
73.03	3.05	2.1/2" SCH 10S	95.0	0.79	AB35	AB45	●	●	●	●
73.03	5.16	2.1/2" SCH 40S	95.0	1.29	AB35	AB45	●	●	●	●
73.03	7.01	2.1/2" SCH 80S	95.0	1.70		AB45				●
88.90	3.05	3" SCH 10S	114.3	1.18	AB35	AB45	●	●	●	●
88.90	5.49	3" SCH 40S	114.3	2.14	AB35	AB45	●	●	●	●
88.90	7.62	3" SCH 80S	114.3	2.74		AB45		●		●
114.30	3.05	4" SCH 10S	152.4	2.03	AB35	AB45	●	●	●	●
114.30	6.02	4" SCH 40S	152.4	4.03	AB35	AB45	●	●	●	●
114.30	8.56	4" SCH 80S	152.4	5.34		AB45		●		●
141.30	3.40	5" SCH 10S	190.5	3.46	AB35	AB45	●	●	●	●
141.30	6.55	5" SCH 40S	190.5	6.51	AB35	AB45	●	●	●	●
168.28	3.40	6" SCH 10S	228.6	5.03	AB35	AB45	●	●	●	●
168.28	7.11	6" SCH 40S	228.6	10.90	AB35	AB45	●	●	●	●
168.28	10.97	6" SCH 80S	228.6	15.30		AB45		●		●
219.08	3.76	8" SCH 10S	304.8	9.73	AB35	AB45	●	●	●	●
219.08	8.18	8" SCH 40S	304.8	21.50	AB35	AB45	●	●	●	●
219.08	12.70	8" SCH 80S	304.8	30.90		AB45				●
273.05	4.19	10" SCH 10S	381.0	16.90	AB35		●		●	
273.05	9.27	10" SCH 40S	381.0	38.60	AB35		●		●	
323.85	4.57	12" SCH 10S	457.0	26.30	AB35		●		●	
323.85	9.53	12" SCH 40S	457.0	59.40	AB35		●		●	
355.60	4.78	14" SCH 10S	533.00	36.30	AB36		●		●	
355.60	9.53	14" SCH 40S	533.00	70.30	AB36		●		●	
406.40	4.78	16" SCH 10S	610.00	47.50	AB36		●		●	
406.40	9.53	16" SCH 40S	610.00	91.60	AB36		●		●	
457.20	4.78	18" SCH 10S	686.00	58.60	AB36		●		●	
457.20	9.53	18" SCH 40S	686.00	122.00	AB36		●		●	
508.00	5.54	20" SCH 10S	762.00	84.00	AB36		●		●	
508.00	9.53	20" SCH 40S	762.00	150.00	AB36		●		●	
609.60	6.35	24" SCH 10S	914.00	141.00	AB36		●		●	
609.60	9.53	24" SCH 40S	914.00	211.00	AB36		●		●	

Mått och ritningar är vägledande



Böj 90°, liten radie

ASTM-A 403 ASME B16.9

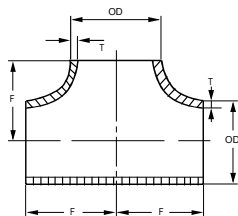
EN 10204 3.1



OD mm	T mm	INCH-GAS-SCH mm	R mm	Kg / st	Artikel nummer		ASTM 304/L		ASTM 316/L	
					Svetsad	Sömlös	Svetsad	Sömlös	Svetsad	Sömlös
33.40	2.77	1" SCH 10S	25.4	0.11	AB15	AB25		●		●
33.40	3.38	1" SCH 40S	25.4	0.13	AB15	AB25		●		●
42.16	2.77	1.1/4" SCH 10S	31.8	0.16	AB15	AB25		●		●
42.16	3.56	1.1/4" SCH 40S	31.8	0.21	AB15	AB25		●		●
48.26	2.77	1.1/2" SCH 10S	38.1	0.22	AB15	AB25		●		●
48.26	3.68	1.1/2" SCH 40S	38.1	0.28	AB15	AB25		●		●
60.33	2.77	2" SCH 10S	50.8	0.48	AB15	AB25		●		●
60.33	3.91	2" SCH 40S	50.8	0.36	AB15	AB25		●		●
73.03	3.05	2.1/2" SCH 10S	63.5	0.52	AB15	AB25		●		●
73.03	5.16	2.1/2" SCH 40S	63.5	0.92	AB15	AB25		●		●
88.90	3.05	3" SCH 10S	76.0	0.84	AB15	AB25		●		●
88.90	5.49	3" SCH 40S	76.0	1.49	AB15	AB25		●		●
114.30	3.05	4" SCH 10S	101.6	1.38	AB15	AB25		●		●
114.30	6.02	4" SCH 40S	101.6	2.65	AB15	AB25		●		●
168.28	3.40	6" SCH 10S	152.4	3.36	AB15		●		●	
168.28	7.11	6" SCH 40S	152.4	6.87	AB15		●		●	
219.08	3.76	8" SCH 10S	203.2	6.57	AB15		●		●	
219.08	8.18	8" SCH 40S	203.2	14.00	AB15		●		●	
273.05	4.19	10" SCH 10S	254.0	11.50	AB15		●		●	
273.05	9.27	10" SCH 40S	254.0	26.25	AB15		●		●	
323.85	4.57	12" SCH 10S	304.8	17.90	AB15		●		●	
323.85	9.53	12" SCH 40S	304.8	40.40	AB15		●		●	
355.60	4.78	14" SCH 10S	533.40	36.30	AB16		●		●	
355.60	9.53	14" SCH 40S	533.40	70.30	AB16		●		●	
406.40	4.78	16" SCH 10S	609.60	47.63	AB16		●		●	
406.40	9.53	16" SCH 40S	609.60	91.63	AB16		●		●	

● =lager

Mått och ritningar är vägledande



T-rör

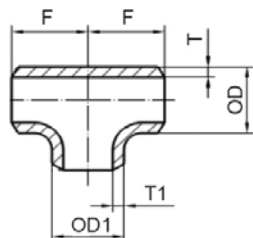
ASTM-A 403 ASME B16.9
EN 10204 3.1



OD mm	T mm	INCH-GAS-SCH mm	F mm	Kg / st	Artikel nummer		ASTM 304/L		ASTM 316/L	
					Svetsad	Sömlös	Svetsad	Sömlöst	Svetsad	Sömlöst
21.34	2.11	1/2" SCH 10S	25.0	0.07	AT10	AT20	●	●	●	●
21.34	2.77	1/2" SCH 40S	25.0	0.08	AT10	AT20	●	●	●	●
21.34	3.73	1/2" SCH 80S	25.0	0.11		AT20		●		●
26.67	2.11	3/4" SCH 10S	29.0	0.09	AT10	AT20	●	●	●	●
26.67	2.87	3/4" SCH 40S	29.0	0.11	AT10	AT20	●	●	●	●
26.67	3.91	3/4" SCH 80S	29.0	0.16		AT20		●		●
33.40	2.77	1" SCH 10S	38.0	0.20	AT10	AT20	●	●	●	●
33.40	3.38	1" SCH 40S	38.0	0.24	AT10	AT20	●	●	●	●
33.40	4.55	1" SCH 80S	38.0	0.32		AT20		●		●
42.16	2.77	1.1/4" SCH 10S	48.0	0.33	AT10	AT20	●	●	●	●
42.16	3.56	1.1/4" SCH 40S	48.0	0.41	AT10	AT20	●	●	●	●
42.16	4.85	1.1/4" SCH 80S	48.0	0.54		AT20		●		●
48.26	2.77	1.1/2" SCH 10S	57.0	0.46	AT10	AT20	●	●	●	●
48.26	3.68	1.1/2" SCH 40S	57.0	0.60	AT10	AT20	●	●	●	●
48.26	5.08	1.1/2" SCH 80S	57.0	0.80		AT20		●		●
60.33	2.77	2" SCH 10S	64.0	0.63	AT10	AT20	●	●	●	●
60.33	3.91	2" SCH 40S	64.0	0.87	AT10	AT20	●	●	●	●
60.33	5.54	2" SCH 80S	64.0	1.20		AT20		●		●
73.03	3.05	2.1/2" SCH 10S	76.0	1.01	AT10	AT20	●	●	●	●
73.03	5.16	2.1/2" SCH 40S	76.0	1.66	AT10	AT20	●	●	●	●
88.90	3.05	3" SCH 10S	86.0	1.37	AT10	AT20	●	●	●	●
88.90	5.49	3" SCH 40S	86.0	1.90	AT10	AT20	●	●	●	●
88.90	7.62	3" SCH 80S	86.0	3.25		AT20		●		●
114.30	3.05	4" SCH 10S	105.0	2.15	AT10	AT20	●	●	●	●
114.30	6.02	4" SCH 40S	105.0	4.13	AT10	AT20	●	●	●	●
114.30	8.56	4" SCH 80S	105.0	5.74		AT20		●		●
141.30	3.40	5" SCH 10S	124.0	3.48	AT10	AT20	●	●	●	●
141.30	6.55	5" SCH 40S	124.0	6.55	AT10	AT20	●	●	●	●
168.28	3.40	6" SCH 10S	143.0	4.76	AT10	AT20	●	●	●	●
168.28	7.11	6" SCH 40S	143.0	9.73	AT10	AT20	●	●	●	●
219.08	3.76	8" SCH 10S	178.0	8.46	AT10	AT20	●	●	●	●
219.08	8.18	8" SCH 40S	178.0	18.00	AT10	AT20	●	●	●	●
219.08	12.70	8" SCH 80S	178.0	27.40		AT20		●		●
273.05	4.19	10" SCH 10S	216.0	14.20	AT10	AT20	●		●	
273.05	9.27	10" SCH 40S	216.0	30.60	AT10	AT20			●	
323.85	4.57	12" SCH 10S	254.0	21.60	AT10	AT20	●		●	
323.85	9.53	12" SCH 40S	254.0	44.30	AT10	AT20	●		●	
355.60	4.78	14" SCH 10S	279.0	27.30	AT11	AT20	●		●	
355.60	9.53	14" SCH 40S	279.0	53.70	AT11	AT20	●		●	
406.40	4.78	16" SCH 10S	305.0	58.90	AT11	AT20	●		●	
406.40	9.53	16" SCH 40S	305.0	99.70	AT11	AT20	●		●	
457.20	4.78	18" SCH 10S	343.00	50.00	AT11		●		●	
457.20	9.53	18" SCH 40S	343.00	100.00	AT11		●		●	
508.00	5.54	20" SCH 10S	381.00	73.00	AT11		●		●	
508.00	9.53	20" SCH 40S	381.00	121.00	AT11		●		●	
609.60	6.35	24" SCH 10S	432.00	100.00	AT11		●		●	
609.60	9.53	24" SCH 40S	432.00	166.00	AT11		●		●	

● =lager

Mått och ritningar är vägledande



T-rör, förminskat

ASTM-A 403 ASME B16.9

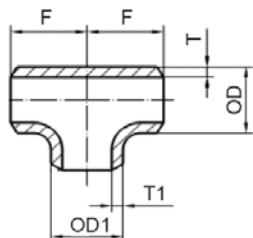
EN 10204 3.1



OD mm	OD1 mm	T mm	T1 mm	INCH-GAS-SCH mm	F mm	Kg / st	Artikel nummer		ASTM 304/L Sömlöst	ASTM 316/L	
							Svetsat	Sömlöst		Svetsat	Sömlöst
26.67	2.11	21.34	2.11	3/4" x 1/2" SCH 10S	29.00	0.08	AT15	AT25	●		●
26.67	2.87	21.34	2.77	3/4" x 1/2" SCH 40S	29.00	0.12	AT15	AT25	●		●
26.67	3.91	21.34	3.73	3/4" x 1/2" SCH 80S	29.00	0.15		AT25			●
33.40	2.77	21.34	2.11	1" x 1/2" SCH 10S	38.00	0.19	AT15	AT25	●		●
33.40	3.38	21.34	2.77	1" x 1/2" SCH 40S	38.00	0.22	AT15	AT25	●		●
33.40	4.55	21.34	3.73	1" x 1/2" SCH 80S	38.00	0.28		AT25	●		●
33.40	2.77	26.67	2.11	1" x 3/4" SCH 10S	38.00	0.19	AT15	AT25	●		●
33.40	3.38	26.67	2.87	1" x 3/4" SCH 40S	38.00	0.23	AT15	AT25	●		●
42.16	2.77	21.34	2.11	1.1/4" x 1/2" SCH 10S	38.00	0.29	AT15	AT25	●		●
42.16	3.56	21.34	2.77	1.1/4" x 1/2" SCH 40S	48.00	0.37	AT15	AT25	●		●
42.16	2.77	26.67	2.11	1.1/4" x 3/4" SCH 10S	48.00	0.29	AT15	AT25	●		●
42.16	3.56	26.67	2.87	1.1/4" x 3/4" SCH 40S	48.00	0.37	AT15	AT25	●		●
42.16	2.77	33.40	2.77	1.1/4" x 1" SCH 10S	48.00	0.31	AT15	AT25	●		●
42.16	3.56	33.40	3.38	1.1/4" x 1" SCH 40S	48.00	0.39	AT15	AT25	●		●
42.16	4.85	33.40	4.55	1.1/4" x 1" SCH 80S	48.00	0.51		AT25	●		●
48.26	2.77	21.34	2.11	1.1/2" x 1/2" SCH 10S	57.00	0.39	AT15	AT25	●		●
48.26	3.68	21.34	2.77	1.1/2" x 1/2" SCH 40S	57.00	0.51	AT15	AT25	●		●
48.26	5.08	21.34	3.73	1.1/2" x 1/2" SCH 80S	57.00	0.67		AT25	●		●
48.26	2.77	26.67	2.11	1.1/2" x 3/4" SCH 10S	57.00	0.40	AT15	AT25	●		●
48.26	3.68	26.67	2.87	1.1/2" x 3/4" SCH 40S	57.00	0.52	AT15	AT25	●		●
48.26	5.08	26.67	3.91	1.1/2" x 3/4" SCH 80S	57.00	0.69		AT25	●		●
48.26	2.77	33.40	2.77	1.1/2" x 1" SCH 10S	57.00	0.42	AT15	AT25	●		●
48.26	3.68	33.40	3.38	1.1/2" x 1" SCH 40S	57.00	0.55	AT15	AT25	●		●
48.26	5.08	33.40	4.55	1.1/2" x 1" SCH 80S	57.00	0.73		AT25	●		●
48.26	2.77	42.16	2.77	1.1/2" x 1.1/4" SCH 10S	57.00	0.44	AT15	AT25	●		●
48.26	3.68	42.16	3.56	1.1/2" x 1.1/4" SCH 40S	57.00	0.57	AT15	AT25	●		●
48.26	5.08	42.16	4.85	1.1/2" x 1.1/4" SCH 80S	57.00	0.77		AT25			●
60.33	2.77	21.34	2.11	2" x 1/2" SCH 10S	64.00	0.54	AT15	AT25			●
60.33	3.91	21.34	2.77	2" x 1/2" SCH 40S	64.00	0.74	AT15	AT25			●
60.33	2.77	26.67	2.11	2" x 3/4" SCH 10S	64.00	0.54	AT15	AT25	●		●
60.33	3.91	26.67	2.87	2" x 3/4" SCH 40S	64.00	0.74	AT15	AT25	●		●
60.33	2.77	33.40	2.77	2" x 1" SCH 10S	64.00	0.54	AT15	AT25	●		●
60.33	3.91	33.40	3.38	2" x 1" SCH 40S	64.00	0.74	AT15	AT25	●		●
60.33	2.77	42.16	2.77	2" x 1.1/4" SCH 10S	64.00	0.57	AT15	AT25	●		●
60.33	3.91	42.16	3.56	2" x 1.1/4" SCH 40S	64.00	0.80	AT15	AT25	●		●
60.33	2.77	48.26	2.77	2" x 1.1/2" SCH 10S	64.00	0.59	AT15	AT25	●		●
60.33	3.91	48.26	3.68	2" x 1.1/2" SCH 40S	64.00	0.83	AT15	AT25	●		●
60.33	5.54	48.26	5.08	2" x 1.1/2" SCH 80S	64.00	1.11		AT25	●		●

● =lager

Mått och ritningar är vägledande



T-rör, förminskat

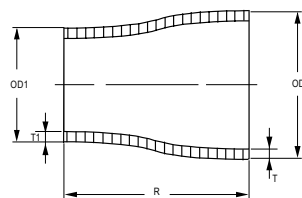
ASTM-A 403 ASME B16.9

EN 10204 3.1



OD mm	OD1 mm	T mm	T1 mm	INCH-GAS-SCH mm	F mm	Kg / st	Artikel nummer		ASTM 304/L		ASTM 316/L	
							Svetsat	Sömlöst	Svetsat	Sömlöst	Svetsat	Sömlöst
73.03	60.33	3.05	2.77	2.1/2" x 2" SCH 10S	76.00	0.94	AT15	AT25		●		●
73.03	60.33	5.16	3.93	2.1/2" x 2" SCH 40S	76.00	1.53	AT15	AT25		●		●
88.90	33.40	3.05	2.77	3" x 1" SCH 10S	86.00	1.08	AT15	AT25				●
88.90	33.40	5.49	3.38	3" x 1" SCH 40S	86.00	1.94	AT15	AT25				●
88.90	48.26	3.05	2.77	3" x 1.1/2" SCH 10S	86.00	1.19	AT15	AT25		●		●
88.90	48.26	5.49	3.68	3" x 1.1/2" SCH 40S	86.00	2.05	AT15	AT25		●		●
88.90	60.33	3.05	2.77	3" x 2" SCH 10S	86.00	1.23	AT15	AT25		●		●
88.90	60.33	5.49	3.91	3" x 2" SCH 40S	86.00	2.16	AT15	AT25		●		●
88.90	60.33	7.62	5.54	3" x 2" SCH 80S	86.00	2.85	AT15	AT25				●
114.30	60.33	3.05	2.77	4" x 2" SCH 10S	114.00	1.88	AT15	AT25	●	●	●	●
114.30	60.33	6.02	3.91	4" x 2" SCH 40S	114.00	3.52	AT15	AT25	●	●	●	●
114.30	88.90	3.05	3.05	4" x 3" SCH 10S	114.00	3.02	AT15	AT25	●	●	●	●
114.30	88.90	6.02	5.49	4" x 3" SCH 40S	114.00	3.83	AT15	AT25	●	●	●	●
168.28	88.90	3.40	3.05	6" x 3" SCH 10S	143.00	4.21	AT15	AT25	●		●	
168.28	88.90	7.11	5.49	6" x 3" SCH 40S	143.00	8.52	AT15	AT25	●		●	
168.28	114.30	3.40	3.05	6" x 4" SCH 10S	143.00	4.34	AT15	AT25	●		●	
168.28	114.30	7.11	6.02	6" x 4" SCH 40S	143.00	8.81	AT15		●		●	
219.08	114.30	3.40	3.05	8" x 4" SCH 10S	178.00	7.48	AT15	AT25	●		●	
219.08	114.30	8.18	6.02	8" x 4" SCH 40S	178.00	15.90	AT15		●		●	
219.08	168.28	3.76	3.40	8" x 6" SCH 10S	178.00	7.91	AT15	AT25	●		●	
219.08	168.28	8.18	7.11	8" x 6" SCH 40S	178.00	16.80	AT15	AT25	●		●	
273.05	168.28	4.19	3.40	10" x 6" SCH 10S	216.00	12.80	AT15		●		●	
273.05	168.28	9.27	7.11	10" x 6" SCH 40S	216.00	27.60	AT15		●		●	
273.05	219.08	4.19	3.76	10" x 8" SCH 10S	216.00	13.30	AT15		●		●	
273.05	219.08	9.27	8.18	10" x 8" SCH 40S	216.00	28.90	AT15		●		●	
323.85	273.05	4.57	3.76	12" x 8" SCH 10S	254.00	19.60	AT15		●		●	
323.85	273.05	9.53	8.18	12" x 8" SCH 40S	254.00	40.30	AT15		●		●	
323.85	273.05	4.57	4.19	12" x 10" SCH 10S	254.00	20.50	AT15		●		●	
323.85	273.05	9.53	9.27	12" x 10" SCH 40S	254.00	42.30	AT15		●		●	

● =lager
Mått och ritningar är vägledande



Kona, koncentrisk

ASTM-A 403 ASME B16.9

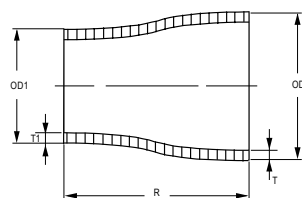
EN 10204 3.1



OD mm	OD1 mm	T mm	T1 mm	INCH-GAS-SCH mm	R mm	Kg / st	Artikel nummer		ASTM 304/L		ASTM 316/L	
							Svetsad	Sömlös	Svetsad	Sömlös	Svetsad	Sömlös
26.67	21.33	2.11	2.11	3/4" x 1/2" SCH 10S	38.1	0.04	AR10	AR20	●	●	●	●
26.67	21.33	2.87	2.77	3/4" x 1/2" SCH 40S	38.1	0.06	AR10	AR20	●	●	●	●
26.67	21.33	3.91	3.73	3/4" x 1/2" SCH 80S	38.1	0.08		AR20				●
33.40	21.33	2.77	2.11	1" x 1/2" SCH 10S	50.8	0.09	AR10	AR20	●	●	●	●
33.40	21.33	3.38	2.77	1" x 1/2" SCH 40S	50.8	0.11	AR10	AR20	●	●	●	●
33.40	21.33	4.55	3.73	1" x 1/2" SCH 80S	50.8	0.13		AR20		●		●
33.40	26.67	2.77	2.11	1" x 3/4" SCH 10S	50.8	0.10	AR10	AR20	●	●	●	●
33.40	26.67	3.38	2.87	1" x 3/4" SCH 40S	50.8	0.12	AR10	AR20	●	●	●	●
33.40	26.67	4.55	3.91	1" x 3/4" SCH 80S	50.8	0.15		AR20				●
42.16	21.34	2.77	2.11	1.1/4" x 1/2" SCH 10S	50.8	0.10	AR10	AR20				●
42.16	21.34	3.56	2.77	1.1/4" x 1/2" SCH 40S	50.8	0.13	AR10	AR20				●
42.16	26.67	2.77	2.11	1.1/4" x 3/4" SCH 10S	50.8	0.11	AR10	AR20				●
42.16	26.67	3.56	2.87	1.1/4" x 3/4" SCH 40S	50.8	0.14	AR10	AR20				●
42.16	33.40	2.77	2.77	1.1/4" x 1" SCH 10S	50.8	0.12	AR10	AR20	●	●	●	●
42.16	33.40	3.56	3.38	1.1/4" x 1" SCH 40S	50.8	0.16	AR10	AR20	●	●	●	●
42.16	33.40	4.85	4.55	1.1/4" x 1" SCH 80S	50.8	0.21		AR20				●
48.26	21.34	2.77	2.11	1.1/2" x 1/2" SCH 10S	63.5	0.14	AR10	AR20	●		●	●
48.26	21.34	3.68	2.77	1.1/2" x 1/2" SCH 40S	63.5	0.18	AR10	AR20	●		●	●
48.26	26.67	2.77	2.11	1.1/2" x 3/4" SCH 10S	63.5	0.15	AR10	AR20	●		●	●
48.26	26.67	3.68	2.87	1.1/2" x 3/4" SCH 40S	63.5	0.20	AR10	AR20	●		●	●
48.26	26.67	5.08	3.91	1.1/2" x 3/4" SCH 80S	63.5	0.27		AR20				●
48.26	33.40	2.77	2.77	1.1/2" x 1" SCH 10S	63.5	0.17	AR10	AR20	●	●	●	●
48.26	33.40	3.68	3.38	1.1/2" x 1" SCH 40S	63.5	0.22	AR10	AR20	●	●	●	●
48.26	33.40	5.08	4.55	1.1/2" x 1" SCH 80S	63.5	0.29		AR20		●		●
48.26	33.40	7.14	6.35	1.1/2" x 1" SCH 160	63.5	0.48		AR20			●	
48.26	42.16	2.77	2.77	1.1/2" x 1.1/4" SCH 10S	63.5	0.18	AR10	AR20	●	●	●	●
48.26	42.16	3.68	3.56	1.1/2" x 1.1/4" SCH 40S	63.5	0.24	AR10	AR20	●	●	●	●
48.26	42.16	5.08	4.85	1.1/2" x 1.1/4" SCH 80S	63.5	0.32		AR20		●		●

● =lager

Mått och ritningar är vägledande



Kona, koncentrisk

ASTM-A 403 ASME B16.9

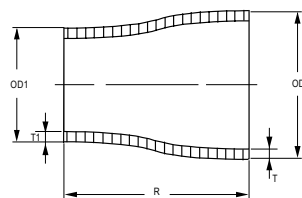
EN 10204 3.1



OD mm	OD1 mm	T mm	T1 mm	INCH-GAS-SCH mm	h mm	Kg / st	Artikel nummer		ASTM 304/L		ASTM 316/L	
							Svetsad	Sömlös	Svetsad	Sömlös	Svetsad	Sömlös
60.33	21.34	2.77	2.11	2" x 1/2" SCH 10S	76.1	0.23	AR10	AR20				●
60.33	21.34	3.91	2.77	2" x 1/2" SCH 40S	76.1	0.28	AR10	AR20				●
60.33	21.34	5.54	3.73	2" x 1/2" SCH 80S	76.1	0.38		AR20				●
60.33	26.67	2.77	2.11	2" x 3/4" SCH 10S	76.1	0.22	AR10	AR20				●
60.33	26.67	3.91	2.87	2" x 3/4" SCH 40S	76.1	0.30	AR10	AR20				●
60.33	33.40	2.77	2.77	2" x 1" SCH 10S	76.1	0.23	AR10	AR20	●	●	●	●
60.33	33.40	3.91	3.38	2" x 1" SCH 40S	76.1	0.32	AR10	AR20	●	●	●	●
60.33	33.40	5.54	4.55	2" x 1" SCH 80S	76.1	0.44		AR20				●
60.33	42.16	2.77	2.77	2" x 1.1/4" SCH 10S	76.1	0.25	AR10	AR20	●	●	●	●
60.33	42.16	3.91	3.56	2" x 1.1/4" SCH 40S	76.1	0.35	AR10	AR20	●	●	●	●
60.33	42.16	5.54	4.85	2" x 1.1/4" SCH 80S	76.1	0.48		AR20		●		●
60.33	48.26	2.77	2.77	2" x 1.1/2" SCH 10S	76.1	0.27	AR10	AR20	●	●	●	●
60.33	48.26	3.91	3.68	2" x 1.1/2" SCH 40S	76.1	0.37	AR10	AR20	●	●	●	●
60.33	48.26	5.54	5.08	2" x 1.1/2" SCH 80S	76.1	0.51		AR20		●		●
73.03	48.26	3.05	2.77	2.1/2" x 1.1/2" SCH 10S	88.9	0.39	AR10	AR20		●		●
73.03	48.26	5.16	3.68	2.1/2" x 1.1/2" SCH 40S	88.9	0.66	AR10	AR20				●
73.03	60.33	3.05	2.77	2.1/2" x 2" SCH 10S	88.9	0.43	AR10	AR20	●	●	●	●
73.03	60.33	5.16	3.91	2.1/2" x 2" SCH 40S	88.9	0.72	AR10	AR20	●	●	●	●
73.03	60.33	7.01	5.54	2.1/2" x 2" SCH 80S	88.9	0.92		AR20				●
88.90	33.40	3.05	2.77	3" x 1" SCH 10S	88.9	0.43	AR10	AR20	●		●	●
88.90	33.40	5.49	3.38	3" x 1" SCH 40S	88.9	0.74	AR10	AR20	●		●	●
88.90	42.16	3.05	2.77	3" x 1.1/4" SCH 10S	88.9	0.43	AR10	AR20				●
88.90	42.16	5.49	3.56	3" x 1.1/4" SCH 40S	88.9	0.75	AR10	AR20				●
88.90	48.26	3.05	2.77	3" x 1.1/2" SCH 10S	88.9	0.45	AR10	AR20	●	●	●	●
88.90	48.26	5.49	3.68	3" x 1.1/2" SCH 40S	88.9	0.78	AR10	AR20	●	●	●	●
88.90	48.26	7.62	5.08	3" x 1.1/2" SCH 80S	88.9	1.04		AR20		●		●
88.90	60.33	3.05	2.77	3" x 2" SCH 10S	88.9	0.48	AR10	AR20	●	●	●	●
88.90	60.33	5.49	3.91	3" x 2" SCH 40S	88.9	0.85	AR10	AR20	●	●	●	●
88.90	60.33	7.62	5.54	3" x 2" SCH 80S	88.9	1.13		AR20		●		●
88.90	73.03	3.05	3.05	3" x 2.1/2" SCH 10S	88.9	0.48	AR10	AR20	●	●	●	●
88.90	73.03	5.49	5.16	3" x 2.1/2" SCH 40S	88.9	0.93	AR10	AR20	●	●	●	●
88.90	73.03	7.62	7.01	3" x 2.1/2" SCH 80S	88.9	1.23		AR20				●

● =lager

Mått och ritningar är vägledande



Kona, koncentrisk

ASTM-A 403 ASME B16.9

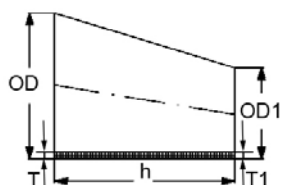
EN 10204 3.1



OD mm	OD1 mm	T mm	T1 mm	INCH-GAS-SCH mm	h mm	Kg / st	Artikelnummer		ASTM 304/L		ASTM 316/L	
							Svetsad	Sömlös	Svetsad	Sömlös	Svetsad	Sömlös
114.30	48.26	3.05	2.77	4" x 1.1/2" SCH 10S	101.6	0.63	AR10	AR20		●		●
114.30	48.26	6.02	3.68	4" x 1.1/2" SCH 40S	101.6	1.18	AR10	AR20		●		●
114.30	48.26	8.56	5.08	4" x 1.1/2" SCH 80S	101.6	1.64		AR20				●
114.30	60.33	3.05	2.77	4" x 2" SCH 10S	101.6	0.67	AR10	AR20	●	●	●	●
114.30	60.33	6.02	3.91	4" x 2" SCH 40S	101.6	1.27	AR10	AR20	●	●	●	●
114.30	73.03	3.05	3.05	4" x 2.1/2" SCH 10S	101.6	0.71	AR10	AR20	●	●	●	●
114.30	73.03	6.02	5.16	4" x 2.1/2" SCH 40S	101.6	1.37	AR10	AR20	●	●	●	●
114.30	73.03	8.56	7.01	4" x 2.1/2" SCH 80S	101.6	1.86		AR20				●
114.30	88.90	3.05	3.05	4" x 3" SCH 10S	101.6	0.76	AR10	AR20	●	●	●	●
114.30	88.90	6.02	5.49	4" x 3" SCH 40S	101.6	1.45	AR10	AR20	●	●	●	●
141.30	88.90	3.40	3.05	5" x 3" SCH 10S	127.0	1.22	AR10	AR20	●		●	●
141.30	88.90	6.55	5.49	5" x 3" SCH 40S	127.0	2.27	AR10	AR20	●		●	●
141.30	114.30	3.40	3.05	5" x 4" SCH 10S	127.0	1.33	AR10	AR20	●	●	●	●
141.30	114.30	6.55	6.02	5" x 4" SCH 40S	127.0	2.50	AR10	AR20	●	●	●	●
168.28	88.90	3.40	3.05	6" x 3" SCH 10S	140.0	1.65	AR10	AR20	●	●	●	●
168.28	88.90	8.18	5.49	6" x 3" SCH 40S	140.0	3.30	AR10	AR20	●	●	●	●
168.28	88.90	10.97	7.62	6" x 3" SCH 80S	140.0	4.96		AR20				●
168.28	114.30	3.40	3.05	6" x 4" SCH 10S	140.0	1.65	AR10	AR20	●	●	●	●
168.28	114.30	8.18	6.02	6" x 4" SCH 40S	140.0	3.30	AR10	AR20	●	●	●	●
219.08	114.30	3.76	3.05	8" x 4" SCH 10S	152	2.43	AR10		●		●	
219.08	114.30	8.18	6.02	8" x 4" SCH 40S	152	5.10	AR10		●		●	
219.08	168.28	3.76	3.40	8" x 6" SCH 10S	152	2.72	AR10		●		●	
219.08	168.28	8.18	7.11	8" x 6" SCH 40S	152	5.71	AR10		●		●	
273.05	168.28	4.19	3.40	10" x 6" SCH 10S	179	4.14	AR10		●		●	
273.05	168.28	9.27	7.11	10" x 6" SCH 40S	179	8.78	AR10		●		●	
273.05	219.08	4.19	3.76	10" x 8" SCH 10S	179	4.49	AR10		●		●	
273.05	219.08	9.27	8.18	10" x 8" SCH 40S	179	9.58	AR10		●		●	
323.85	168.28	4.57	3.40	12" x 6" SCH 10S	203	5.92	AR10		●		●	
323.85	219.08	4.57	3.76	12" x 8" SCH 10S	203	6.31	AR10		●		●	
323.85	219.08	9.53	8.18	12" x 8" SCH 40S	203	12.70	AR10		●		●	
323.85	273.05	4.57	4.19	12" x 10" SCH 10S	203	6.78	AR10		●		●	
323.85	273.05	9.53	9.27	12" x 10" SCH 40S			AR10		●		●	
355.60	273.05	6.35	4.19	14" x 10" SCH 10S			AR11		●		●	
355.60	323.85	6.35	4.57	14" x 12" SCH 10S			AR11		●		●	
406.40	323.85	4.78	4.57	16" x 12" SCH 10S	355.6	15.20	AR11		●		●	
406.40	355.60	4.78	4.78	16" x 14" SCH 10S	355.6	15.80	AR11		●		●	
457.20	406.40	6.35	4.78	18" x 16" SCH 10S			AR11		●		●	
508.00	457.20	6.35	6.35	20" x 18" SCH 10S			AR11		●		●	
609.60	508.00	6.35	6.35	24" x 20" SCH 10S			AR11		●		●	

● =lager

Mått och ritningar är vägledande



Kona, excentrisk

ASTM-A 403 ASME B16.9

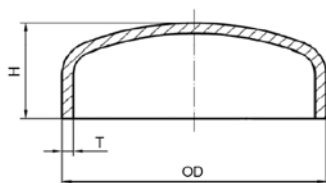
EN 10204 3.1



OD mm	OD1 mm	T mm	T1 mm	INCH-GAS-SCH	h mm	Kg / st	Artikel nummer Sömlös	ASTM 316/L Sömlös
26.67	21.33	2.11	2.11	3/4" x 1/2" SCH 10S	38.1	0.04	AR25	●
26.67	21.33	2.87	2.77	3/4" x 1/2" SCH 40S	38.1	0.06	AR25	●
33.40	21.33	2.77	2.11	1" x 1/2" SCH 10S	50.8	0.09	AR25	●
33.40	21.33	3.38	2.77	1" x 1/2" SCH 40S	50.8	0.11	AR25	●
33.40	26.67	2.77	2.11	1" x 3/4" SCH 10S	50.8	0.10	AR25	●
33.40	26.67	3.38	2.87	1" x 3/4" SCH 40S	50.8	0.12	AR25	●
42.16	21.34	2.77	2.11	1.1/4" x 1/2" SCH 10S	50.8	0.10	AR25	●
42.16	21.34	3.56	2.77	1.1/4" x 1/2" SCH 40S	50.8	0.13	AR25	●
42.16	33.40	2.77	2.77	1.1/4" x 1" SCH 10S	50.8	0.12	AR25	●
42.16	33.40	3.56	3.38	1.1/4" x 1" SCH 40S	50.8	0.16	AR25	●
48.26	21.34	2.77	2.11	1.1/2" x 1/2" SCH 10S	63.5	0.17	AR25	●
48.26	21.34	3.68	2.77	1.1/2" x 1/2" SCH 40S	63.5	0.18	AR25	●
48.26	26.67	2.77	2.11	1.1/2" x 3/4" SCH 10S	63.5	0.15	AR25	●
48.26	26.67	3.68	2.87	1.1/2" x 3/4" SCH 40S	63.5	0.20	AR25	●
48.26	33.40	2.77	2.77	1.1/2" x 1" SCH 10S	63.5	0.17	AR25	●
48.26	33.40	3.68	3.38	1.1/2" x 1" SCH 40S	63.5	0.22	AR25	●
48.26	42.16	2.77	2.77	1.1/2" x 1.1/4" SCH 10S	63.5	0.18	AR25	●
60.33	21.34	2.77	2.11	2" x 1/2" SCH 10S	76.1	0.23	AR25	●
60.33	21.34	2.91	2.77	2" x 1/2" SCH 40S	76.1	0.28	AR25	●
60.33	26.67	2.77	2.11	2" x 3/4" SCH 10S	76.1	0.22	AR25	●
60.33	26.67	3.91	2.87	2" x 3/4" SCH 40S	76.1	0.30	AR25	●
60.33	33.40	2.77	2.77	2" x 1" SCH 10S	76.1	0.23	AR25	●
60.33	33.40	3.91	3.38	2" x 1" SCH 40S	76.1	0.32	AR25	●
60.33	42.16	2.77	2.77	2" x 1.1/4" SCH 10S	76.1	0.25	AR25	●
60.33	42.16	3.91	3.56	2" x 1.1/4" SCH 40S	76.1	0.30	AR25	●
60.33	48.26	2.77	2.77	2" x 1.1/2" SCH 10S	76.1	0.27	AR25	●
60.33	48.26	3.91	3.68	2" x 1.1/2" SCH 40S	76.1	0.37	AR25	●
88.90	33.40	3.05	2.77	3" x 1" SCH 10S	88.9	0.43	AR25	●
88.90	33.40	5.49	3.38	3" x 1" SCH 40S	88.9	0.80	AR25	●
88.90	42.16	3.05	2.77	3" x 1.1/4" SCH 10S	88.9	0.43	AR25	●
88.90	42.16	5.49	3.56	3" x 1.1/4" SCH 40S	88.9	0.75	AR25	●
88.90	48.26	3.05	2.77	3" x 1.1/2" SCH 10S	88.9	0.45	AR25	●
88.90	48.26	5.49	3.68	3" x 1.1/2" SCH 40S	88.9	0.78	AR25	●
88.90	60.33	3.05	2.77	3" x 2" SCH 10S	88.9	0.48	AR25	●
88.90	60.33	5.49	3.91	3" x 2" SCH 40S	88.9	0.85	AR25	●
88.90	73.03	3.05	3.05	3" x 2.1/2" SCH 10S	88.9	0.48	AR25	●
88.90	73.03	5.49	5.16	3" x 2.1/2" SCH 40S	88.9	1.08	AR25	●
114.30	48.26	3.05	2.77	4" x 1.1/2" SCH 10S	101.6	0.63	AR25	●
114.30	48.26	6.02	3.68	4" x 1.1/2" SCH 40S	101.6	1.18	AR25	●
114.30	60.33	3.05	2.77	4" x 2" SCH 10S	101.6	0.67	AR25	●
114.30	60.33	6.02	3.91	4" x 2" SCH 40S	101.6	1.57	AR25	●
114.30	73.03	3.05	3.05	4" x 2.1/2" SCH 10S	101.6	0.71	AR25	●
114.30	73.03	6.02	5.16	4" x 2.1/2" SCH 40S	101.6	1.66	AR25	●
114.30	88.90	3.05	3.05	4" x 3" SCH 10S	101.6	0.76	AR25	●
114.30	88.90	6.02	5.49	4" x 3" SCH 40S	101.6	1.45	AR25	●

● =lager

Mått och ritningar är vägledande



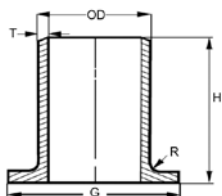
Kupad Gavel

ASTM-A 403 ASME B16.9
EN 10204 3.1



OD mm	T mm	INCH-GAS-SCH	H mm	Kg / st	Artikel nummer	ASTM 304/L	ASTM 316/L
21.34	2.11	1/2" SCH 10S	25.4	0.050	AC10	●	●
21.34	2.77	1/2" SCH 40S	25.4	0.070	AC10	●	●
26.67	2.11	3/4" SCH 10S	25.4	0.060	AC10	●	●
26.67	2.87	3/4" SCH 40S	25.4	0.080	AC10	●	●
33.40	2.77	1" SCH 10S	38.1	0.075	AC10	●	●
33.40	3.38	1" SCH 40S	38.1	0.090	AC10	●	●
42.16	2.77	1.1/4" SCH 10S	38.1	0.100	AC10	●	●
42.16	3.56	1.1/4" SCH 40S	38.1	0.130	AC10	●	●
48.26	2.77	1.1/2" SCH 10S	38.1	0.130	AC10	●	●
48.26	3.68	1.1/2" SCH 40S	38.1	0.170	AC10	●	●
60.33	2.77	2" SCH 10S	38.1	0.190	AC10	●	●
60.33	3.91	2" SCH 40S	38.1	0.260	AC10	●	●
73.03	3.05	2.1/2" SCH 10S	38.1	0.240	AC10	●	●
73.03	5.16	2.1/2" SCH 40S	38.1	0.410	AC10	●	●
88.90	3.05	3" SCH 10S	50.8	0.370	AC10	●	●
88.90	5.49	3" SCH 40S	50.8	0.680	AC10	●	●
114.30	3.05	4" SCH 10S	63.5	0.570	AC10	●	●
114.30	6.02	4" SCH 40S	63.5	1.130	AC10	●	●
141.30	3.40	5" SCH 10S	76.2	1.100	AC10	●	●
141.30	6.55	5" SCH 40S	76.2	2.120	AC10	●	●
168.28	3.40	6" SCH 10S	88.9	1.410	AC10	●	●
168.28	7.11	6" SCH 40S	88.9	2.950	AC10	●	●
219.08	3.76	8" SCH 10S	101.6	2.470	AC10	●	●
219.08	12.70	8" SCH 40S	101.6	7.800	AC10	●	●
273.05	4.19	10" SCH 10S	127.0	4.510	AC10	●	●
273.05	9.27	10" SCH 40S	127.0	10.000	AC10	●	●
323.85	4.57	12" SCH 10S	152.4	6.670	AC10	●	●
323.85	9.53	12" SCH 40S	152.4	13.900	AC10	●	●
355.60	4.78	14" SCH 10S	165.1	8.160	AC10	●	●
355.60	9.53	14" SCH 40S	165.1	15.900	AC10	●	●
406.40	4.19	16" SCH 10S	177.8	14.510	AC10	●	●
406.40	4.19	16" SCH 40S	177.8	20.000	AC10	●	●

● =lager
Mått och ritningar är vägledande



Svetsring med krage, typ A

MSS SP 43, ASTM-A 403 ASME B16.9

EN 10204 3.1



D mm	D2 mm	INCH-GAS-SCH mm	h mm	G mm	R mm	Kg / st	Artikel nummer		ASTM 304/L		ASTM 316/L	
							Svetsad	Sömlös	Svetsad	Sömlös	Svetsad	Sömlös
21.34	2.11	1/2" SCH 10S	50.8	34.9	3.18	0.06	AS10	AS20		●		●
21.34	2.77	1/2" SCH 40S	50.8	34.9	3.18	0.08	AS10	AS20		●		●
26.67	2.11	3/4" SCH 10S	50.8	42.9	3.18	0.08	AS10	AS20		●		●
26.67	2.87	3/4" SCH 40S	50.8	42.9	3.18	0.10	AS10	AS20		●		●
33.40	2.77	1" SCH 10S	50.8	50.8	3.18	0.13	AS10	AS20		●		●
33.40	3.38	1" SCH 40S	50.8	50.8	3.18	0.16	AS10	AS20		●		●
42.60	2.77	1.1/4" SCH 10S	50.8	63.5	4.76	0.18	AS10	AS20		●		●
42.16	3.56	1.1/4" SCH 40S	50.8	63.5	4.76	0.23	AS10	AS20		●		●
48.26	2.77	1.1/2" SCH 10S	50.8	73.0	6.35	0.21	AS10	AS20		●		●
48.26	3.68	1.1/2" SCH 40S	50.8	73.0	6.35	0.28	AS10	AS20		●		●
60.33	2.77	2" SCH 10S	50.8	92.1	7.94	0.34	AS10	AS20		●		●
60.33	3.91	2" SCH 40S	63.5	92.1	7.94	0.47	AS10	AS20		●		●
73.03	3.05	2.1/2" SCH 10S	63.5	104.8	7.94	0.45	AS10	AS20		●		●
73.03	5.16	2.1/2" SCH 40S	63.5	104.8	7.94	0.74	AS10	AS20		●		●
88.90	3.05	3" SCH 10S	63.5	127.0	9.53	0.57	AS10	AS20		●		●
88.90	5.49	3" SCH 40S	63.5	127.0	9.53	1.01	AS10	AS20		●		●
114.30	3.05	4" SCH 10S	76.2	157.2	11.11	0.87	AS10	AS20		●		●
114.30	6.02	4" SCH 40S	76.2	157.2	11.11	1.68	AS10	AS20		●		●
168.28	3.40	6" SCH 10S	88.9	215.9	12.70	1.64	AS10	AS20	●	●	●	●
168.28	7.11	6" SCH 40S	88.9	215.9	12.70	3.37	AS10	AS20	●	●	●	●
219.08	3.76	8" SCH 10S	101.6	269.0	12.70	2.65	AS10	AS20	●		●	
219.08	8.18	8" SCH 40S	101.6	269.0	12.70	5.67	AS10	AS20	●		●	
273.05	4.19	10" SCH 10S	127.0	323.9	12.70	4.38	AS10	AS20	●		●	
273.05	9.27	10" SCH 40S	127.0	323.9	12.70	9.55	AS10	AS20	●		●	
323.85	4.57	12" SCH 10S	152.4	381.0	12.70	6.74	AS10	AS20	●		●	
323.85	9.53	12" SCH 40S	152.4	381.0	12.70	13.80	AS10	AS20	●		●	
355.60	4.78	14" SCH 10S	152.4	412.80	13.00	9.12	AS11		●		●	
406.40	4.78	16" SCH 10S	152.4	469.90	13.00	11.02	AS11		●		●	
457.20	4.78	18" SCH 10S	152.4	533.40	13.00	12.90	AS11				●	
508.00	5.54	20" SCH 10S	152.4	584.20	13.00	14.51	AS11				●	
609.60	6.35	24" SCH 10S	152.4	692.20	13.00	21.01	AS11				●	

● =lager

Mått och ritningar är vägledande

