

Svetsfläns med krage

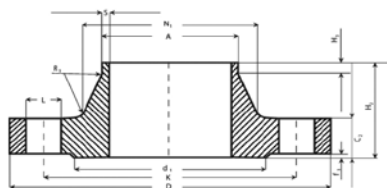
Typ 11 PN 6*
EN 1092-1 ADW0, ADW2, ADW9, ADW10
EN 10204 3.1

*) ersätter DIN 2631



DN mm	A mm	D mm	C2 mm	K mm	H2 mm	N1 mm	S mm	R1 mm	H3 mm	d1 mm	f1 mm	Nr	Bult Gänga	L mm	Kg / st	Artikel nr	EN 1.4404
15	21.3	80	12	55	30	30	2.0	4	6	40	2	4	M10	11	0.41	GW10	●
20	26.9	90	14	65	32	38	2.3	4	6	50	2	4	M10	11	0.62	GW10	●
25	33.7	100	14	75	35	42	2.6	4	6	60	2	4	M10	11	0.76	GW10	●
32	42.4	120	14	90	35	55	2.6	6	6	70	2	4	M12	14	1.11	GW10	●
40	48.3	130	14	100	38	62	2.6	6	7	80	2	4	M12	14	1.26	GW10	●
50	60.3	140	14	110	38	74	2.9	6	8	90	2	4	M12	14	1.43	GW10	●
65	76.1	160	14	130	38	88	2.9	6	9	110	2	4	M12	14	1.77	GW10	●
80	88.9	190	16	150	42	102	3.2	8	10	128	2	4	M16	18	2.88	GW10	●
100	114.3	210	16	170	45	130	3.6	8	10	148	2	4	M16	18	3.41	GW10	●
125	139.7	240	18	200	48	155	4.0	8	10	178	2	8	M16	18	4.65	GW10	●
150	168.3	265	18	225	48	184	4.5	10	12	202	2	8	M16	18	5.50	GW10	●
200	219.1	320	20	280	55	236	6.3	10	15	258	2	8	M16	18	8.60	GW10	●
250	273.0	375	22	335	60	290	6.3	12	15	312	2	12	M16	18	11.70	GW10	●
300	323.9	440	22	395	62	342	7.1	12	15	365	2	12	M20	22	15.30	GW10	●

1) avvikande röranslutning



Svetsfläns med krage

Typ 11 PN 10 / 16 / 25 / 40*
EN 1092-1 ADW0, ADW2, ADW9, ADW10
EN 10204 3.1

*) ersätter DIN 2632 / 2633 / 2634 / 2635

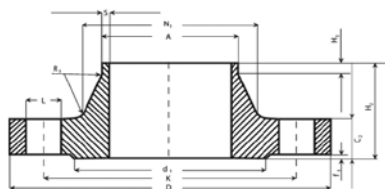


DN mm	A mm	D mm	C2 mm	K mm	H2 mm	N1 mm	S mm	R1 mm	H3 mm	d1 mm	f1 mm	Nr	Bult Gänga	L mm	Kg / st	Artikel nr	EN 1.4301	EN 1.4404	EN 1.4571
10	17.2	90	16	60	35	28	2.0	4	6	40	2	4	M12	14	0.68	GW11		●	
15	20.0 ¹	95	16	65	38	32	2.0	4	6	45	2	4	M12	14	0.77	GW11	●	●	
15	21.3	95	16	65	38	32	2.0	4	6	45	2	4	M12	14	0.77	GW11	●	●	●
20	25.0 ¹	105	18	75	40	40	2.0	4	6	58	2	4	M12	14	1.09	GW11	●	●	●
20	26.9	105	18	75	40	40	2.3	4	6	58	2	4	M12	14	1.09	GW11	●	●	●
25	30.0 ¹	115	18	85	40	46	2.0	4	6	68	2	4	M12	14	1.30	GW11	●	●	●
25	33.7	115	18	85	40	46	2.6	4	6	68	2	4	M12	14	1.30	GW11	●	●	●
32	38.0 ¹	140	18	100	42	56	2.0	6	6	78	2	4	M16	18	1.91	GW11	●	●	
32	42.4	140	18	100	42	56	2.6	6	6	78	2	4	M16	18	1.91	GW11	●	●	●
40	44.5 ¹	150	18	110	45	64	2.0	6	7	88	2	4	M16	18	2.15	GW11		●	
40	48.3	150	18	110	45	64	2.6	6	7	88	2	4	M16	8	2.15	GW11	●	●	●

1) avvikande röranslutning

● =lager

Mått och ritningar är vägledande



Svetsfläns med krage

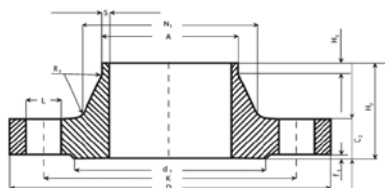
Typ 11 PN 10 / 16*
EN 1092-1 ADW0, ADW2, ADW9, ADW10
EN 10204 3.1

*) ersätter DIN 2632 / 2633



DN mm	A mm	D mm	C2 mm	K mm	H2 mm	N1 mm	S mm	R1 mm	H3 mm	d1 mm	f1 mm	Ant	Bult Gänga	L mm	Kg / st	Art nr	EN 1.4301	EN 1.4404	EN 1.4571
50	54,0 ¹	165	18	125	45	74	2.0	6	8	102	2	4	M16	18	2.53	GW12		●	
50	60.3	165	18	125	45	74	2.9	6	8	102	2	4	M16	18	2.53	GW12	●	●	●
65	76.1	185	18	145	45	92	2.9	6	10	122	2	4	M16	18	3.03	GW12	●	●	●
65	76.1	185	18	145	45	92	2.9	6	10	122	2	8	M16	18	3.03	GW12	●	●	
80	84,0 ¹	200	20	160	50	105	2	6	10	138	2	8	M16	18	3.92	GW12		●	
80	88.9	200	20	160	50	105	3.2	6	10	138	2	8	M16	18	3.92	GW12	●	●	●
100	104,0 ¹	220	20	180	52	131	2.0	8	12	158	2	8	M16	18	4.62	GW12	●	●	
100	114.3	220	20	180	52	131	3.6	8	12	158	2	8	M16	18	4.62	GW12	●	●	●
125	129,0 ¹	250	22	210	55	156	2.0	8	12	188	2	8	M16	18	6.30	GW12	●	●	
125	139.7	250	22	210	55	156	4.0	8	12	188	2	8	M16	18	6.30	GW12	●	●	●
150	154,0 ¹	285	22	240	55	184	2.0	10	12	212	2	8	M20	22	7.81	GW12	●	●	
150	156,0 ¹	285	22	240	55	184	3.0	10	12	212	2	8	M20	22	7.81	GW12	●	●	
150	159,0 ¹	285	22	240	55	184	4.5	10	12	212	2	8	M20	22	7.81	GW12		●	
150	168.3	285	22	240	55	184	4.5	10	12	212	2	8	M20	22	7.81	GW12	●	●	●

¹⁾ avvikande röranslutning



Svetsfläns med krage

Typ 11 PN 10*
EN 1092-1 ADW0, ADW2, ADW9, ADW10
EN 10204 3.1

*) ersätter DIN 2632

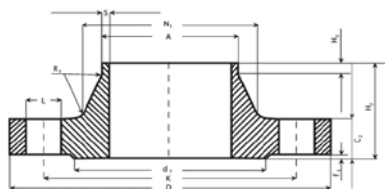


DN mm	A mm	D mm	C2 mm	K mm	H2 mm	N1 mm	S mm	R1 mm	H3 mm	d1 mm	f1 mm	Ant	Bult Gänga	L mm	Kg / st	Art nr	EN 1.4301	EN 1.4404	EN 1.4571
200	206,0 ¹	340	24	295	62	234	3.0	10	16	268	2	8	M20	22	11.60	GW13		●	
200	219.1	340	24	295	62	234	6.3	10	16	268	2	8	M20	22	11.60	GW13	●	●	●
250	256,0 ¹	395	26	350	68	292	3.0	12	16	320	2	12	M20	22	15.80	GW13		●	
250	273.0	395	26	350	68	292	6.3	12	16	320	2	12	M20	22	15.80	GW13	●	●	●
300	323.9	445	26	400	68	342	7.1	12	16	370	2	12	M20	22	18.30	GW13	●	●	●
350	355.6	505	26	460	68	385	7.1	12	16	430	2	16	M20	22	25.30	GW13		●	
400	406.4	565	26	515	72	440	7.1	12	16	482	2	16	M24	26	30.60	GW13	●	●	●
500	508.0	670	28	620	75	542	7.1	12	16	585	2	20	M24	26	40.50	GW13	●	●	●
600	609.6	780	30	725	82	642	8.0	12	18	685	2	20	M27	30	52.90	GW13	●	●	

¹⁾ avvikande röranslutning

● =lager

Mått och ritningar är vägledande



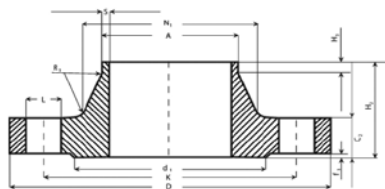
Svetsfläns med krage

Typ 11 PN 16*
EN 1092-1 ADW0, ADW2, ADW9, ADW10
EN 10204 3.1

*) ersätter DIN 2633



DN mm	A mm	D mm	C2 mm	K mm	H2 mm	N1 mm	S mm	R1 mm	H3 mm	d1 mm	f1 mm	Ant	Bult Gänga	L mm	Kg / st	Art nr	EN 1.4301	EN 1.4404	EN 1.4571
200	219.1	340	24	295	62	235	6.3	10	16	268	2	12	M20	22	11.50	GW14	●	●	
250	273.0	405	26	355	70	292	6.3	12	16	320	2	12	M24	26	16.70	GW14	●	●	●
300	323.9	460	28	410	78	344	7.1	12	16	378	2	12	M24	26	22.10	GW14	●	●	●
350	355.6	520	30	470	82	390	8.0	12	16	438	2	16	M24	26	32.80	GW14	●	●	
400	406.4	580	32	525	85	445	8.0	12	16	490	2	16	M27	30	41.10	GW14	●	●	
500	508.0	715	36	650	84	548	8.0	12	16	610	2	20	M30	33	66.20	GW14	●		
600	609.6	840	40	770	88	670	8.8	12	18	725	2	20	M33	36	104.00	GW14	●		



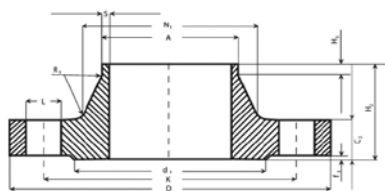
Svetsfläns med krage

Typ 11 PN 25 / 40*
EN 1092-1 ADW0, ADW2, ADW9, ADW10
EN 10204 3.1

*) ersätter DIN 2634 / 2635



DN mm	A mm	D mm	C2 mm	K mm	H2 mm	N1 mm	S mm	R1 mm	H3 mm	d1 mm	f1 mm	Ant	Bult Gänga	L mm	Kg / st	Art nr	EN 1.4301	EN 1.4404	EN 1.4571
50	60.3	165	20	125	48	75	2.9	6	8	102	2	4	M16	18	2.85	GW15	●	●	●
65	76.1	185	22	145	52	90	2.9	6	10	122	2	8	M16	18	3.68	GW15	●	●	●
80	88.9	200	24	160	58	105	3.2	8	12	138	2	8	M16	18	4.78	GW15	●	●	●
100	114.3	235	24	190	65	134	3.6	8	12	162	2	8	M20	22	6.46	GW15	●	●	●
125	139.7	270	26	220	68	162	4.0	8	12	188	2	8	M24	26	8.86	GW15		●	
150	168.3	300	28	250	75	192	4.5	10	12	218	2	8	M24	26	11.70	GW15	●	●	



Svetsfläns med krage

Typ 11 PN 25*
EN 1092-1 ADW0, ADW2, ADW9, ADW10
EN 10204 3.1

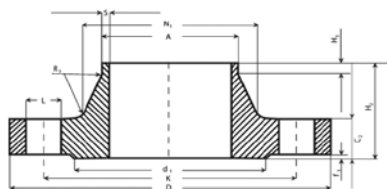
*) ersätter DIN 2634



DN mm	A mm	D mm	C2 mm	K mm	H2 mm	N1 mm	S mm	R1 mm	H3 mm	d1 mm	f1 mm	Ant	Bult Gänga	L mm	Kg / st	Art nr	EN 1.4301	EN 1.4404	EN 1.4571
200	219.10	360	30	310	80	244	6.3	10	16	278	2	12	M24	26	17.10	GW16	●	●	
250	273.00	425	32	370	88	298	7.1	12	18	335	2	12	M27	30	24.30	GW16	●	●	
300	323.90	485	34	430	92	352	8.0	12	18	395	2	16	M27	30	31.80	GW16	●	●	●

● =lager

Mått och ritningar är vägledande



Svetsfläns med krage

Typ 11 PN 40*
EN 1092-1 ADW0, ADW2, ADW9, ADW10
EN 10204 3.1er

*) ersätter DIN 2635

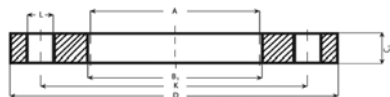


DN mm	A mm	D mm	C2 mm	K mm	H2 mm	N1 mm	S mm	R1 mm	H3 mm	d1 mm	f1 mm	Antal	Bult Gänga	L mm	Kg / st	Art nr	EN 1.4301	EN 1.4404
200	219.10	375	34	320	88	244	6.3	10	16	285	2	12	M27	30	21.00	GW17	●	●
250	273.00	450	38	385	105	306	7.1	12	18	345	2	12	M30	33	34.20	GW17	●	●
300	323.90	515	42	450	115	362	8.0	12	18	410	2	16	M30	33	47.60	GW17	●	●

Plan Svetsfläns

Typ 01 PN 6*
EN 1092-1 ADW0, ADW2, ADW9, ADW10
EN 10204 3.1

*) ersätter DIN 2573

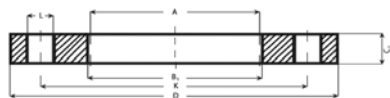


DN mm	A mm	D mm	B1 mm	K mm	C1 mm	Antal	Bult Gänga	L mm	Kg / st	Artikel nummer	EN 1.4301	EN 1.4404	EN 1.4571
50	60.3	140	61.5	110	16	4	M12	14	1.48	GS10		●	
65	76.1	160	77.5	130	16	4	M12	14	1.86	GS10		●	●
80	88.9	190	90.5	150	18	4	M16	18	2.95	GS10		●	
100	114.3	210	116.0	170	18	4	M16	18	3.26	GS10		●	
200	219.1	320	221.5	280	22	8	M16	18	6.88	GS10	●	●	

Plan Svetsfläns

Typ 01 PN 10 / 16 / 25 / 40*
EN 1092-1 ADW0, ADW2, ADW9, ADW10
EN 10204 3.1

*) ersätter DIN 2576

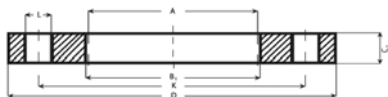


DN mm	A mm	D mm	B1 mm	K mm	C1 mm	Antal	Bult Gänga	L mm	Kg / st	Artikel nummer	EN 1.4301	EN 1.4404	EN 1.4571
15	21.3	95	22.0	65	14	4	M12	14	0.67	GS11	●	●	
20	26.9	105	27.5	75	16	4	M12	14	0.94	GS11	●	●	
25	30.0 ¹⁾	115	34.5	85	16	4	M12	14	1.11	GS11		●	
25	33.7	115	34.5	85	16	4	M12	14	1.11	GS11	●	●	●
32	42.4	140	43.5	100	18	4	M16	18	1.82	GS11	●	●	
40	48.3	150	49.5	110	18	4	M16	18	2.08	GS11	●	●	●

¹⁾ avvikande rörslutning

● = lager

Mått och ritningar är vägledande

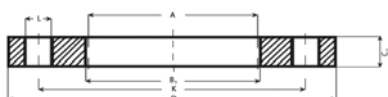


Plan Svetsfläns
 Typ 01 PN 10 / 16*
 EN 1092-1 ADW0, ADW2, ADW9, ADW10
 EN 10204 3.1

*) ersätter DIN 2576



DN mm	A mm	D mm	B1 mm	K mm	C1 mm	Antal	Bult Gänga	L mm	Kg / st	Artikel nummer	EN 1.4301	EN 1.4404	EN 1.4571
50	54,0 ¹	165	55.1	125	20	4	M16	18	2.73	GS12	●	●	
50	60.3	165	61.5	125	20	4	M16	18	2.73	GS12	●	●	●
65	76.1	185	77.5	145	20	4	M16	18	3.16	GS12	●	●	●
65	76.1	185	77.5	145	20	8	M16	18	3.16	GS12	●	●	
80	84,0 ¹	200	85.5	160	20	8	M16	18	3.60	GS12	●	●	
80	88.9	200	90.5	160	20	8	M16	18	3.60	GS12	●	●	●
100	101.6 ¹	220	105.6	180	22	8	M16	18	4.39	GS12	●	●	
100	104,0 ¹	220	105.6	180	22	8	M16	18	4.39	GS12	●	●	
100	106.0 ¹	220	107.6	180	22	8	M16	18	4.39	GS12	●		
100	108.0 ¹	220	109.6	180	22	8	M16	18	4.39	GS12	●	●	
100	114.3	220	130.8	180	22	8	M16	18	4.39	GS12	●	●	●
125	129,0 ¹	250	130.8	210	22	8	M16	18	5.41	GS12	●	●	
125	139.7	250	156.1	210	22	8	M16	18	5.41	GS12	●	●	●
150	154,0 ¹	285	156.1	240	24	8	M20	22	7.14	GS12	●	●	
150	156,0 ¹	285	158.1	240	24	8	M20	22	7.14	GS12	●	●	
150	159.0 ¹	285	161.1	240	24	8	M20	22	7.14	GS12	●		
150	168.3	285	170.5	240	24	8	M20	22	7.14	GS12	●	●	●



Plan Svetsfläns
 Typ 01 PN 10*
 EN 1092-1 ADW0, ADW2, ADW9, ADW10
 EN 10204 3.1

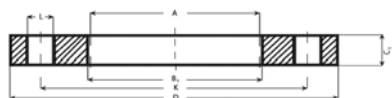
*) ersätter DIN 2576



DN mm	A mm	D mm	B1 mm	K mm	C1 mm	Antal	Bult Gänga	L mm	Kg / st	Artikel nummer	EN 1.4301	EN 1.4404	EN 1.4571
200	204,0 ¹	340	206.8	295	24	8	M20	22	9.27	GS13	●	●	
200	219.10	340	221.5	295	24	8	M20	22	9.27	GS13	●	●	●
250	254,0 ¹	395	257.2	350	26	12	M20	22	11.80	GS13	●	●	
250	256,0 ¹	395	259.2	350	26	12	M20	22	11.80	GS13	●	●	
250	273.0	395	276.5	350	26	12	M20	22	11.80	GS13	●	●	●
300	304,0 ¹	445	307.7	400	26	12	M20	22	13.60	GS13		●	
300	306.0	445	309.7	400	26	12	M20	22	13.60	GS13		●	
300	323.9	445	327.5	400	26	12	M20	22	13.60	GS13	●	●	●
350	355.6	505	359.7	460	30	16	M20	22	20.40	GS13	●	●	●
400	406.4	565	411.0	515	32	16	M24	26	27.50	GS13	●	●	●
450	457.2	615	462.0	565	36	20	M24	26	33.60	GS13		●	
500	508.0	670	513.5	620	38	20	M24	26	40.20	GS13	●	●	
600	609.6	780	616.5	725	42	20	M27	30	54.50	GS13	●		

● =lager

Mått och ritningar är vägledande

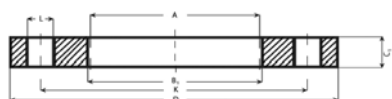


Plan Svetsfläns

Typ 01 PN 16
EN 1092-1 ADW0, ADW2, ADW9, ADW10
EN 10204 3.1



DN mm	A mm	D mm	B1 mm	K mm	C1 mm	Antal	Bult Gänga	L mm	Kg / st	Artikel nummer	EN 1.4301	EN 1.4404
200	219.1	340	221.5	295	26	12	M20	22	9.73	GS14	●	●
250	273.1	405	276.5	355	29	12	M24	26	14.20	GS14		●
300	323.9	460	327.5	410	32	12	M24	26	19.00	GS14		●

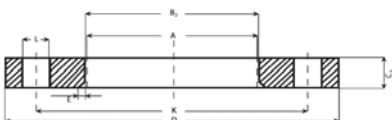


Plan Svetsfläns

Typ 01 PN 25 / 40
EN 1092-1 ADW0, ADW2, ADW9, ADW10
EN 10204 3.1



DN mm	A mm	D mm	B1 mm	K mm	C1 mm	Antal	Bult Gänga	L mm	Kg / st	Artikel nummer	EN 1.4404
50	60.3	165	61.5	125	20	4	M16	18	2.73	GS15	●
125	139.7	270	141.5	220	28	8	M24	26	8.19	GS15	●



Lösfläns

Typ 02 PN 6
EN 1092-1 ADW0, ADW2, ADW9, ADW10
EN 10204 3.1



*) ersätter DIN 2642

DN mm	A mm	D mm	B2 mm	K mm	C1 mm	E mm	Antal	Bult Gänga	L mm	Kg / st	Artikel nummer	EN 1.4404
15	21.3	80	25.0	55	12	3	4	M10	11	0.39	GL10	●
25	33.7	100	38.0	75	14	4	4	M10	11	0.69	GL10	●
32	42.4	120	46.0	90	16	5	4	M12	14	1.12	GL10	●
40	48.3	130	53.0	100	16	5	4	M12	14	1.29	GL10	●
50	60.3	140	65.0	110	16	5	4	M12	14	1.42	GL10	●
65	76.1	160	81.0	130	16	6	4	M12	14	1.76	GL10	●
80	88.9	190	94.0	150	18	6	4	M16	18	2.84	GL10	●
100	114.3	210	120.0	170	18	6	4	M16	18	3.10	GL10	●
125	139.7	240	145.0	200	20	6	8	M16	18	4.12	GL10	●
150	168.3	265	174.0	225	20	6	8	M16	18	4.53	GL10	●
200	219.1	320	226.0	280	22	6	8	M16	18	6.51	GL10	●
250	273.0	375	281.0	335	24	8	12	M16	18	8.32	GL10	●
300	323.9	440	333.0	395	24	8	12	M20	22	11.10	GL10	●

● =lager

Mått och ritningar är vägledande



Lösfläns

Typ 02 PN 10 / 16 / 25 / 40*
EN 1092-1 ADW0, ADW2, ADW9, ADW10
EN 10204 3.1

*) ersätter DIN 2642



DN mm	A mm	D mm	B2 mm	K mm	C1 mm	E mm	Nr	Bult Gänga	L mm	Kg / st	Art nr	EN 1.4301	EN 1.4404
15	20.0 ¹⁾	95	24.0	65	14	3	4	M12	14	0.65	GL11	●	●
15	21.3	95	25.0	65	14	3	4	M12	14	0.65	GL11	●	●
20	26.9	105	31.0	75	16	4	4	M12	14	0.91	GL11	●	●
25	33.7	115	38.0	85	16	4	4	M12	14	1.08	GL11	●	●
32	38.0 ¹⁾	115	43.0	100	18	5	4	M16	18	1.77	GL11	●	●
32	42.4	140	47.0	100	18	5	4	M16	18	1.77	GL11	●	●
40	44.5 ¹⁾	150	50.0	110	18	5	4	M16	18	2.02	GL11	●	●
40	48.3	150	53.0	110	18	5	4	M16	18	2.02	GL11	●	●

¹⁾ avvikande röranslutning



Lösfläns

Typ 02 PN 10 / 16*
EN 1092-1 ADW0, ADW2, ADW9, ADW10
EN 10204 3.1

*) ersätter DIN 2642



DN mm	A mm	D mm	B2 mm	K mm	C1 mm	E mm	Nr	Bult Gänga	L mm	Kg / st	Art nr	EN 1.4301	EN 1.4404
50	54,0	165	59,0	125	19	5	4	M16	18	2,52	GL12	●	
50	60,3	165	65,0	125	20	5	4	M16	18	2,52	GL12	●	●
65	70,0 ¹⁾	185	75,0	145	20	6	4	M16	18	3,05	GL12	●	
65	76,1	185	81,0	145	20	6	4	M16	18	3,05	GL12	●	●
65	76,1	185	81,0	145	20	6	8	M16	18	3,05	GL12	●	●
80	84,0 ¹⁾	200	89,0	160	20	6	8	M16	18	3,48	GL12	●	
80	88,9	200	94,0	160	20	6	8	M16	18	3,48	GL12	●	●
100	104,0 ¹⁾	220	109,0	180	22	6	8	M16	18	4,20	GL12	●	
100	108 ¹⁾	220	113,0	180	22	6	8	M16	18	4,20	GL12		●
100	114,3	220	120,0	180	22	6	8	M16	18	4,20	GL12	●	●
125	129,0 ¹⁾	250	134,0	210	22	6	8	M16	18	5,21	GL12	●	
125	139,7	250	145,0	210	22	6	8	M16	18	5,21	GL12	●	●
150	154,0 ¹⁾	285	159,0	240	24	6	8	M20	22	6,89	GL12	●	●
150	159,0 ¹⁾	285	164,0	240	24	6	8	M20	22	6,89	GL12	●	●
150	168,3	285	174,0	240	24	6	8	M20	22	6,89	GL12	●	●

● =lager

Mått och ritningar är vägledande



Lösfläns

Typ 02 PN 10*
EN 1092-1 ADW0, ADW2, ADW9, ADW10
EN 10204 3.1

*) ersätter DIN 2642



DN mm	A mm	D mm	B2 mm	K mm	C1 mm	E mm	Antal	Bult Gänga	L mm	Kg / st	Artikel nummer	EN 1.4301	EN 1.4404
200	204,0 ¹⁾	340	210.0	295	24	6	8	M20	22	8.87	GL13	●	●
200	219.1	340	226.0	295	24	6	8	M20	22	8.87	GL13	●	●
250	254.0	395	262	350	26	8	12	M20	22	11,20	GL13	●	●
250	273.0	395	281.0	350	26	8	12	M20	22	11.20	GL13	●	●
300	304,0 ¹⁾	445	312.0	400	26	8	12	M20	22	12.80	GL13	●	●
300	323.9	445	333.0	400	26	8	12	M20	22	12.80	GL13	●	●
350	355.6	505	365.0	460	30	8	16	M20	22	19.40	GL13	●	●
400	406.4	565	416.0	515	32	8	16	M24	26	26.40	GL13	●	●
500	508.0	670	519.0	620	38	8	20	M24	26	38.50	GL13	●	●
600	609.6	780	622.0	725	42	8	20	M27	30	52.20	GL13	●	

¹⁾ avvikande röranslutning



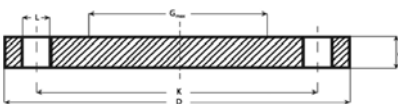
Lösfläns

Typ 02 PN 16*
EN 1092-1 ADW0, ADW2, ADW9, ADW10
EN 10204 3.1

*) ersätter DIN 2642



DN mm	A mm	D mm	B2 mm	K mm	C1 mm	E mm	Antal	Bult Gänga	L mm	Kg / st	Artikel nummer	EN 1.4301	EN 1.4404
200	219.1	340	226.0	295	26	6	12	M20	22	9.31	GL14	●	●



Blindfläns

Typ 05 PN 6*
EN 1092-1 ADW0, ADW2, ADW9, ADW10
EN 10204 3.1

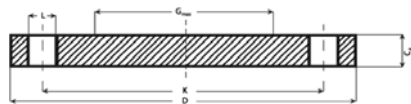
*) ersätter DIN 2527



DN mm	D mm	C4 mm	K mm	Gmax mm	Antal	Bult Gänga	L mm	Kg / st	Artikel nummer	EN 1.4404
40	130	14	100	-	4	M12	14	1.39	GB10	●
50	140	14	110	-	4	M12	14	1.62	GB10	●
65	160	14	130	55	4	M12	14	2.14	GB10	●
100	210	16	170	90	4	M16	18	4.22	GB10	●
125	240	18	200	115	8	M16	18	6.10	GB10	●
150	265	18	225	140	8	M18	18	7.51	GB10	●
200	320	20	280	190	8	M18	18	12.30	GB10	●
250	375	22	335	235	12	M16	18	18.50	GB10	●

● =lager

Mått och ritningar är vägledande



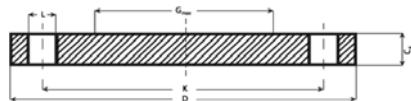
Blindfläns

Typ 05 PN 10 / 16 / 25 / 40*
EN 1092-1 ADW0, ADW2, ADW9, ADW10
EN 10204 3.1

*) ersätter DIN 2642



DN mm	D mm	C4 mm	K mm	Nr	Bult Gänga	L mm	Kg / st	Art nr	EN 1.4301	EN 1.4404	EN 1.4571
15	95	16	65	4	M12	14	0.81	GB11	●	●	
20	105	18	75	4	M12	14	1.14	GB11	●	●	●
25	115	18	85	4	M12	14	1.38	GB11	●	●	●
32	140	18	100	4	M16	18	2.03	GB11	●		●
40	150	18	110	4	M16	18	2.35	GB11	●	●	●



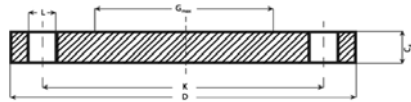
Blindfläns

Typ 05 PN 10 / 16*
EN 1092-1 ADW0, ADW2, ADW9, ADW10
EN 10204 3.1

*) ersätter DIN 2642



DN mm	D mm	C4 mm	K mm	Gmax mm	Nr	Bult Gänga	L mm	Kg / st	Art nr	EN 1.4301	EN 1.4404	EN 1.4571
50	165	18	125	-	4	M16	18	2.88	GB12	●	●	●
65	185	18	145	55	4	M16	18	3.51	GB12	●	●	●
65	185	18	145	55	8	M16	18	3.51	GB12		●	
80	200	20	160	70	8	M16	18	4.61	GB12	●	●	●
100	220	20	180	90	8	M16	18	5.65	GB12	●	●	●
125	250	22	210	115	8	M16	18	8.13	GB12	●	●	●
150	285	22	240	140	8	M20	22	10.50	GB12	●	●	●



Blindfläns

Typ 05 PN 10*
EN 1092-1 ADW0, ADW2, ADW9, ADW10
EN 10204 3.1

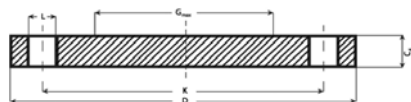
*) ersätter DIN 2527



DN mm	D mm	C4 mm	K mm	Gmax mm	Nr	Bult Gänga	L mm	Kg / st	Art nr	EN 1.4301	EN 1.4404	EN 1.4571
200	340	24	295	190	8	M20	22	16.50	GB13	●	●	●
250	395	26	350	235	12	M20	22	24.10	GB13	●	●	●
300	445	26	400	285	12	M20	22	30.80	GB13	●	●	●
350	505	26	460	330	16	M20	22	39.60	GB13	●	●	●
400	565	26	515	380	16	M24	26	49.40	GB13	●	●	
450	615	28	565	425	20	M24	27	63.00	GB13		●	
500	670	28	620	475	20	M24	27	75.20	GB13	●	●	●
600	780	34	725	575	20	M27	30	124.00	GB13	●	●	

● =lager

Mått och ritningar är vägledande



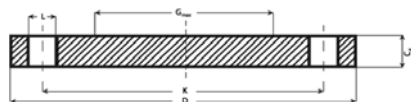
Blindfläns

Typ 05 PN 16*
EN 1092-1 ADW0, ADW2, ADW9, ADW10
EN 10204 3.1

*) ersätter DIN 2527



DN mm	D mm	C4 mm	K mm	Gmax mm	Antal	Bult Gänga	L mm	Kg / st	Artikel nummer	EN 1.4301	EN 1.4404	EN 1.4571
200	340	24	295	190	12	M20	22	16.20	GB14	●	●	●
250	405	26	355	235	12	M24	26	25.00	GB14	●	●	
300	460	28	410	285	12	M24	26	35.10	GB14	●		
500	715	44	650	475	20	M30	33	133.00	GB14	●		



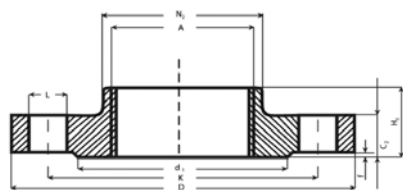
Blindfläns

Typ 05 PN 25 / 40*
EN 1092-1 ADW0, ADW2, ADW9, ADW10
EN 10204 3.1

*) ersätter DIN 2527



DN mm	D mm	C4 mm	K mm	Gmax mm	Antal	Bult Gänga	L mm	Kg / st	Artikel nummer	EN 1.4301	EN 1.4404
50	165	20	125	-	4	M16	18	3.20	GB15	●	●
65	185	22	145	55	8	M16	18	4.29	GB15		●
80	200	24	160	70	8	M16	18	5.54	GB15	●	●
100	235	24	190	90	8	M20	22	7.60	GB15	●	●
125	270	26	220	115	8	M24	26	10.80	GB15		●
150	300	28	250	140	8	M24	26	14.60	GB15	●	●



Gängfläns

Typ 13 PN 10 / 16 / 25 / 40*
EN 1092-1 ADW0, ADW2, ADW9, ADW10
EN 10204 3.1

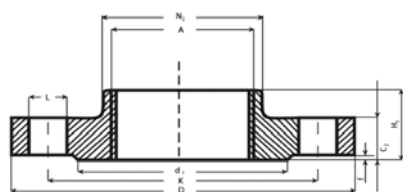
*) ersätter DIN 2566



DN mm	A mm	D mm	C2 mm	K mm	N2 mm	H1 mm	Gänga	d1 mm	f mm	Antal	Bult Gänga	L mm	Kg / sr	Art nr	EN 1.4301	EN 1.4404
15	21.3	95	16	65	35	22	R 1/2"	45	2	4	M12	14	0.67	GT11	●	●
20	26.9	105	18	75	45	26	R 3/4"	58	2	4	M12	14	0.94	GT11	●	●
25	33.7	115	18	85	52	28	R 1"	68	2	4	M12	14	1.11	GT11	●	●
32	42.4	140	18	100	60	30	R 1.1/4"	78	2	4	M16	18	1.82	GT11	●	●
40	48.3	150	18	110	70	32	R 1.1/2"	88	2	4	M16	18	2.08	GT11	●	●

● =lager

Mått och ritningar är vägledande



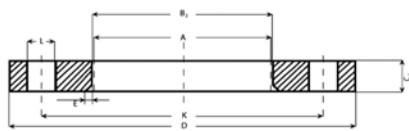
Gängfläns

Typ 13 PN 10 / 16*
 EN 1092-1 ADW0, ADW2, ADW9, ADW10
 EN 10204 3.1
 *) ersätter DIN 2566



DN mm	A mm	D mm	C2 mm	K mm	N2 mm	H1 mm	Gänga	d1 mm	f mm	Nr	Bult Gänga	L mm	Kg / st	Art nr	EN 1.4301	EN 1.4404
50	60.3	165	18	125	84	28	R 2"	102	2	4	M16	18	2.73	GT12	●	●
65	76.1	185	18	145	104	32	R 2.1/2"	122	2	4	M16	18	3.16	GT12	●	●
80	88.9	200	20	160	118	34	R 3"	138	2	8	M16	18	3.60	GT12	●	●
100	114.3	220	20	180	140	40	R 4"	158	2	8	M16	18	4.39	GT12	●	●

● =lager
 Mått och ritningar är vägledande



Lösfläns

PN 10 Typ C

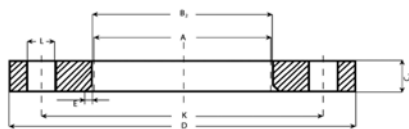
DIN 2642 / Anslutning Dimension DIN 2642



DN mm	A mm	K mm	C1 mm	A mm	B2 mm	Antal	Bult Gänga	L mm	Artikel nummer	Blank	Artikel nummer	Grå Epoxy 7001
15	95	65	16	21.3	24	4	M12	14	GL83	●	GL91	●
20	105	75	16	26.9	30	4	M12	14	GL83	●	GL91	●
25	115	85	16	33.7	36	4	M12	14	GL83	●	GL91	●
32	140	100	16	42.4	46	4	M16	18	GL83	●	GL91	●
40	150	110	18	48.3	54	4	M16	18	GL83	●	GL91	●
50	165	125	18	57-60,3	65	4	M16	18	GL83	●	GL91	●
65	185	145	18	76.1	81	4	M16	18	GL83	●	GL91	●
80	200	160	20	88.9	94	8	M16	18	GL83	●	GL91	●
100	220	180	20	108-114,3	119	8	M16	18	GL83	●	GL91	●
125	250	210	22	133-139,7	145	8	M16	18	GL83	●	GL91	●
150	285	240	22	159-168,3	173	8	M20	22	GL83	●	GL91	●
200	340	295	24	219.1	225	8	M20	22	GL83	●	GL91	●
250	395	350	26	273	279	12	M20	22	GL83	●	GL91	●
300	445	400	26	323.9	329	12	M20	22	GL83	●	GL91	●
350	505	460	26	355.6	362	16	M20	22	GL83	●	GL91	●
400	565	515	32	406.4	413	16	M24	26	GL83	●	GL91	●
450	615	565	32	457.2	465	20	M24	26	GL83	●	GL91	●
500	670	620	34	508	517	20	M24	26	GL83	●	GL91	●
600	780	725	36	609.6	618	20	M27	30	GL83	●	GL91	●

● =lager

Mått och ritningar är vägledande



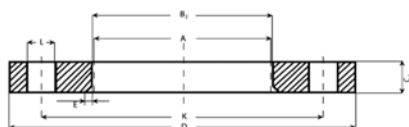
Lösfläns

PN 10 Typ A

DIN 2642 / Anslutning Dimension DIN 2642



DN mm	A mm	K mm	C1 mm	A mm	B2 mm	Nr	Bult Gänga	L mm	Artikel nummer	Blank	Artikel nummer	Grå Epoxy 7001
32	140	100	16	35-38	42	4	M16	18	GL82		GL90	●
40	150	110	18	40-44,5	48	4	M16	18	GL82	●	GL90	
50	165	125	18	50-54	60	4	M16	18	GL82	●	GL90	●
65	185	145	18	69-70	75	4	M16	18	GL82	●	GL90	●
80	200	160	20	80-86	90	8	M16	18	GL82	●	GL90	●
100	220	180	20	102-106	111	8	M16	18	GL82	●	GL90	●
125	250	210	22	129-131	136	8	M16	18	GL82	●	GL90	●
150	285	240	22	154-156	161	8	M20	22	GL82	●	GL90	●
200	340	295	24	204-208	212	8	M20	22	GL82	●	GL90	●
250	395	350	26	254-258	264	12	M20	22	GL82	●	GL90	●
300	445	400	26	304-308	315	12	M20	22	GL82	●	GL90	●



Lösfläns

PN 10 Typ C

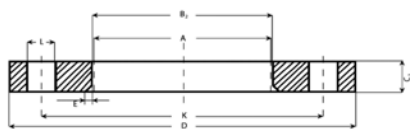
DIN 2642 / Anslutning Dimension DIN 2642



DN mm	A mm	K mm	C1 mm	A mm	B2 mm	Nr	Bult Gänga	L mm	Artikel nummer	Blank
15	95	65	12	21.3	24	4	M12	14	GL81	●
20	105	75	12	26.9	30	4	M12	14	GL81	●
25	115	85	12	33.7	36	4	M12	14	GL81	●
32	140	100	16	42.4	46	4	M16	18	GL81	●
40	150	110	16	48.3	54	4	M16	18	GL81	●
50	165	125	16	57-60,3	65	4	M16	18	GL81	●
65	185	145	16	76.1	81	4	M16	18	GL81	●
80	200	160	18	88.9	94	8	M16	18	GL81	●
100	220	180	18	108-114,3	119	8	M16	18	GL81	●
125	250	210	18	133-139,7	145	8	M16	18	GL81	●
150	285	240	18	159-168,3	173	8	M20	22	GL81	●
200	340	295	20	219.1	225	8	M20	22	GL81	●
250	395	350	22	273	279	12	M20	22	GL81	●

● =lager

Mått och ritningar är vägledande

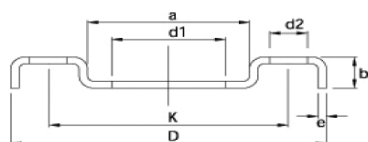


Lösfläns PN 10 / 16 Typ A DIN 2642 / Anslutning Dimension DIN 2642



DN mm	A mm	K mm	C1 mm	A mm	B2 mm	Antal	Bult Gänga	L mm	Artikel nummer	Epoxy vit
32	140	100	16	35-38	42	4	M16	18	GL80	●
40	150	110	16	40-44,5	48	4	M16	18	GL80	●
50	165	125	16	50-54	60	4	M16	18	GL80	●
65	185	145	16	69-70	75	4	M16	18	GL80	●
80	200	160	18	80-86	90	8	M16	18	GL80	●
100	220	180	18	102-106	111	8	M16	18	GL80	●
125	250	210	18	129-131	136	8	M16	18	GL80	●
150	285	240	18	154-156	161	8	M20	22	GL80	●
200	340	295	20	204-208	212	8	M20	22	GL80	●

● =lager
Mått och ritningar är vägledande



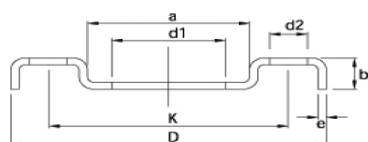
Pressad Lösfläns, ISO

PN 10
DIN 2642

*) ersätter DIN 2632 / 2633 / 2634 / 2635



Metrisk DN / mm	D mm	d1 mm	k mm	a mm	e mm	b mm	d2 mm	Artikel nummer	EN 1.4301	EN 1.4404
15 / 21,3	95	24	65	38	3	12	4x13,5	GL70	●	●
20 / 26,9	105	30	75	48	3	14	4x13,5	GL70	●	●
25 / 33,7	115	37	85	53	3	16	4x13,5	GL70	●	●
32 / 42,4	140	46	100	68	3	16	4x17,5	GL70	●	●
40 / 48,3	150	54	110	77	4	17,5	4x17,5	GL70	●	●
50 / 60,3	165	65	125	91	4	19,5	4x17,5	GL70	●	●
65 / 76,1	185	81	145	108	4	21,5	4x17,5	GL70	●	●
80 / 88,9	200	94	160	123	4	21,5	8x17,5	GL70	●	●
100 / 114,3	220	119	180	141	4	22	8x17,5	GL70	●	●
125 / 139,7	250	145	210	168	5	22	8x17,5	GL70	●	●
150 / 168,3	285	173	240	192	5	25	8x21,5	GL70	●	●
200 / 219,1	340	225	295	245	6	28	8x21,5	GL70	●	●
250 / 273,0	395	279	350	295	6	31	12x21,5	GL70	●	●
300 / 323,9	445	329	400	345	6	34	12x21,5	GL70	●	●
350 / 355,6	505	362	460		8	36	16x21,5	GL70		●
400 / 406,4	565	413	515		8	38	16x26,0	GL70	●	●



Pressad Lösfläns, DIN

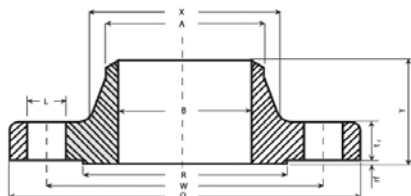
PN 10
DIN 2642

*) ersätter DIN 2632 / 2633 / 2634 / 2635



Metrisk DN / mm	D mm	d1 mm	k mm	a mm	e mm	b mm	d2 mm	Artikel nummer	EN 1.4301	EN 1.4404
40 / 40-44,5	150	48	110	77	4	17,5	4x13,5	GL70		●
50 / 50-54	165	58	125	91	4	19,5	4x13,5	GL70		●
65 / 69-70	185	78	145	108	4	21	4x13,5	GL70		●
80 / 80-86	200	90	160	123	4	21	8x17,5	GL70	●	●
100 / 102-106	220	110	180	141	4	22	8x17,5	GL70	●	●
125 / 129-131	250	135	210	168	5	22	8x17,5	GL70		●
150 / 154-156	285	160	240	192	5	26	8x21,5	GL70	●	●
200 / 204-208	340	212	295	245	6	28	8x21,5	GL70	●	●
250 / 254-258	395	262	350	295	6	31	12x21,5	GL70	●	●
300 / 304-306	445	312	400	345	6	34	12x21,5	GL70		●

● =lager
Mått och ritningar är vägledande



Svetsfläns med krage

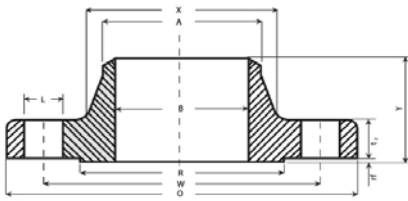
WN / RF Class 150
ASTM-A 182, ASME B16.5
EN 10204 3.1



NPS	mm	SCH	mm	O mm	tf mm	W mm	Y mm	X mm	B mm	R mm	rf mm	Bult		Kg / st	Art nr	ASTM 304/L	ASTM 316/L
												Antal	L mm				
1/2"	21.3	10S	2.11	90	11.2	60.3	46	30	17.1	34.9	2	4	15.9	0.49	FW10	●	●
1/2"	21.3	40S	2.77	90	11.2	60.3	46	30	15.8	34.9	2	4	15.9	0.49	FW10	●	●
1/2"	21.3	80S	3.73	90	11.2	60.3	46	30	13.8	34.9	2	4	15.9	0.49	FW10	●	●
3/4"	26.7	10S	2.11	100	12.7	69.9	51	38	22.5	42.9	2	4	15.9	0.72	FW10	●	●
3/4"	26.7	40S	2.87	100	12.7	69.9	51	38	21.0	42.9	2	4	15.9	0.72	FW10	●	●
3/4"	26.7	80S	3.91	100	12.7	69.9	51	38	18.9	42.9	2	4	15.9	0.72	FW10	●	●
1"	33.4	10S	2.77	110	14.3	79.4	54	49	27.9	50.8	2	4	15.9	1.05	FW10	●	●
1"	33.4	40S	3.38	110	14.3	79.4	54	49	26.6	50.8	2	4	15.9	1.05	FW10	●	●
1"	33.4	80S	4.55	110	14.3	79.4	54	49	24.3	50.8	2	4	15.9	1.05	FW10	●	●
1.1/4"	42.2	10S	2.77	115	15.9	88.9	56	59	36.7	63.5	2	4	15.9	1.38	FW10	●	●
1.1/4"	42.2	40S	3.56	115	15.9	88.9	56	59	35.1	63.5	2	4	15.9	1.38	FW10	●	●
1.1/2"	48.3	10S	2.77	125	17.5	98.4	60	65	42.8	73.0	2	4	15.9	1.77	FW10	●	●
1.1/2"	48.3	40S	3.68	125	17.5	98.4	60	65	40.9	73.0	2	4	15.9	1.77	FW10	●	●
1.1/2"	48.3	80S	5.08	125	17.5	98.4	60	65	38.1	73.0	2	4	15.9	1.77	FW10	●	●
2"	60.3	10S	2.77	150	19.1	120.7	62	78	54.8	92.1	2	4	19.1	2.64	FW10	●	●
2"	60.3	40S	3.91	150	19.1	120.7	62	78	52.5	92.1	2	4	19.1	2.64	FW10	●	●
2"	60.3	80S	5.54	150	19.1	120.7	62	78	49.2	92.1	2	4	19.1	2.64	FW10	●	●
2.1/2"	73.0	10S	3.05	180	22.2	139.7	68	90	66.9	104.8	2	4	19.1	4.21	FW10	●	●
2.1/2"	73.0	40S	5.16	180	22.2	139.7	68	90	62.7	104.8	2	4	19.1	4.21	FW10	●	●
3"	88.9	10S	3.05	190	23.9	152.4	68	108	82.8	127.0	2	4	19.1	5.04	FW10	●	●
3"	88.9	40S	5.49	190	23.9	152.4	68	108	77.9	127.0	2	4	19.1	5.04	FW10	●	●
4"	114.3	10S	3.05	230	23.9	190.5	75	135	108.2	157.2	2	8	19.1	7.13	FW10	●	●
4"	114.3	40S	6.02	230	23.9	190.5	75	135	102.3	157.2	2	8	19.1	7.13	FW10	●	●
4"	114.3	80S	8.56	230	23.9	190.5	75	135	97.2	157.2	2	8	19.1	7.13	FW10	●	●
5"	141.3	10S	3.40	255	23.9	215.9	87	164	134.5	185.7	2	8	22.2	8.98	FW10	●	●
5"	141.3	40S	6.55	255	23.9	215.9	87	164	128.2	185.7	2	8	22.2	8.98	FW10	●	●
6"	168.3	10S	3.40	280	25.4	214.3	87	192	161.5	215.9	2	8	22.2	11.00	FW10	●	●
6"	168.3	40S	7.11	280	25.4	214.3	87	192	154.1	215.9	2	8	22.2	11.00	FW10	●	●
8"	219.1	10S	3.76	345	28.6	298.5	100	246	211.6	269.9	2	8	22.2	18.24	FW10	●	●
8"	219.1	40S	8.18	345	28.6	298.5	100	246	202.7	269.9	2	8	22.2	18.24	FW10	●	●
10"	273.1	10S	4.19	405	30.2	362.0	100	305	264.7	323.8	2	12	25.4	24.94	FW10	●	●
10"	273.1	40S	9.27	405	30.2	362.0	100	305	254.6	323.8	2	12	25.4	24.94	FW10	●	●
12"	323.9	10S	4.57	485	31.8	431.8	113	365	314.8	381.0	2	12	25.4	38.28	FW10	●	●
12"	323.9	40S	9.53	485	31.8	431.8	113	365	304.8	381.0	2	12	25.4	38.28	FW10	●	●
14"	355.6	10S	4.78	535	35.0	476.3	125	400	364.0	412.8	2	12	28.6	50.35	FW10	●	●
14"	355.6	40S	9.53	535	35.0	476.3	125	400	336.5	412.8	2	12	28.6	50.35	FW10	●	●
16"	406.4	10S	4.78	595	36.6	539.8	125	457	396.8	469.9	2	16	28.6	62.55	FW10	●	●
16"	406.4	40S	9.53	595	36.6	539.8	125	457	387.3	469.9	2	16	28.6	62.55	FW10	●	●
18"		10S														●	●
18"		40S														●	●
20"		10S														●	●
20"		40S														●	●
24"		10S														●	●
24"		40S														●	●

● =lager

Mått och ritningar är vägledande

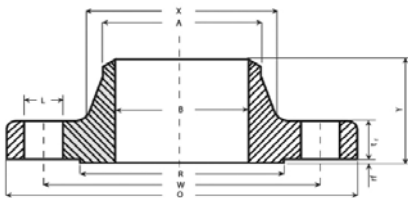


Svetsfläns med krage

WN / RF Class 300
ASTM-A 182, ASME B16.5
EN 10204 3.1



NPS	mm	SCH	mm	O mm	tf mm	W mm	Y mm	X mm	B mm	R mm	rf mm	Bult		Kg / st	Art nr	ASTM 304/L	ASTM 316/L
												Antal	L mm				
1/2"	21.3	40S	2.77	95	12.7	66.7	51	38	15.8	34.9	2	4	15.9	FW15	0.77	●	●
1/2"	21.3	80S	3.73	95	12.7	66.7	51	38	13.8	34.9	2	4	15.9	FW15	0.77		●
3/4"	26.7	40S	2.87	115	14.3	82.6	56	48	21	42.9	2	4	19.1	FW15	1.30	●	●
3/4"	26.7	80S	3.91	115	14.3	82.6	56	48	18.9	42.9	2	4	19.1	FW15	1.30		●
1"	33.5	40S	3.38	125	15.9	88.9	60	54	24.4	50.8	2	4	19.1	FW15	1.64	●	●
1"	33.5	80S	4.55	125	15.9	88.9	60	54	26.6	50.8	2	4	19.1	FW15	1.64	●	●
1.1/4"	42.2	40S	3.56	135	17.5	98.4	64	64	35.1	63.5	2	4	19.1	FW15	2.09	●	●
1.1/4"	42.2	80S	4.85	135	17.5	98.4	64	64	32.5	63.5	2	4	19.1	FW15	2.09	●	
1.1/2"	48.3	40S	3.68	155	19.1	114.3	67	70	40.9	73.0	2	4	22.2	FW15	3.00	●	●
1.1/2"	48.3	80S	5.08	155	19.1	114.3	67	70	38.1	73.0	2	4	22.2	FW15	3.00	●	●
2"	60.5	40S	3.91	165	20.7	127.0	68	84	52.5	92.1	2	8	19.1	FW15	3.52	●	●
2"	60.5	80S	5.54	165	20.7	127.0	68	84	49.4	92.1	2	8	19.1	FW15	3.52	●	●
2.1/2"	73.2	40S	5.16	190	23.9	149.2	75	100	62.7	104.8	2	8	22.2	FW15	5.32	●	●
3"	88.9	40S	5.49	210	27.0	168.3	78	117	77.9	127.0	2	8	22.2	FW15	7.19	●	●
3"	88.9	80S	7.62	210	27.0	168.3	78	117	73.7	127.0	2	8	22.2	FW15	7.19		●
4"	114.3	40S	6.02	255	30.2	200.0	84	146	97.7	157.2	2	8	22.0	FW15	11.63	●	●
6"	168.4	40S	7.11	320	35.0	269.9	97	206	154.1	215.9	2	12	22.2	FW15	19.91	●	●
5"																●	
6"	168.4	80S	10.97	320	35.0	269.9	97	206	146.5	215.9	2	12	22.2	FW15	19.91	●	●
8"	219.2	40S	8.18	380	39.7	330.2	110	260	202.7	269.9	2	12	25.4	FW15	30.89	●	●



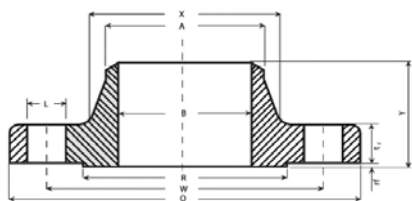
Svetsfläns med krage

WN / RF Class 600
ASTM-A 182, ASME B16.5
EN 10204 3.1



NPS	mm	SCH	mm	O mm	tf mm	W mm	Y mm	X mm	B mm	R mm	rf mm	Bult		Kg / st	Art nr	ASTM 304/L	ASTM 316/L
												Antal	L mm				
1/2"	21.3	80S	3.73	95	14.3	66.7	52	38	13.8	34.9	7	4	15.9	0.89	FW20	●	●
3/4"	26.7	80S	3.91	115	15.9	82.6	57	48	18.9	42.9	7	4	19.1	1.49	FW20	●	●
1"	33.5	80S	4.55	125	17.5	88.9	62	54	24.4	50.8	7	4	19.1	1.88	FW20	●	●
1.1/4"	42.2	80S	4.85	135	20.7	98.4	67	64	32.5	63.5	7	4	19.1	2.55	FW20	●	●
1.1/2"	48.3	80S	5.08	155	22.3	114.3	70	70	38.1	73.0	7	4	22.2	3.62	FW20	●	●
2"	60.5	80S	5.54	165	25.4	127.0	73	84	49.4	92.1	7	8	19.1	4.49	FW20	●	●
3"	88.9	80S	7.62	210	31.8	168.3	83	117	73.7	127.0	7	8	22.2	8.85	FW20	●	●
4"	114.3	80S	8.56	275	38.1	215.9	102	152	97.2	157.2	7	8	25.4	17.92	FW20	●	●
6"	168.4	80S	10.97	355	47.7	292.1	117	222	146.5	215.9	7	12	28.6	36.20	FW20	●	●

● =lager
Mått och ritningar är vägledande

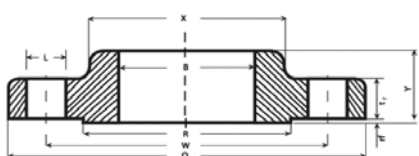


Svetsfläns med krage

WN / RF Class 1500
ASTM-A 182, ASME B16.5
EN 10204 3.1



NPS	mm	SCH	mm	O mm	tf mm	W mm	Y mm	X mm	B mm	R mm	rf mm	Bult		Kg / st	Artikel nummer	ASTM 316/L
												Antal	L mm			
1/2"	21.3	80S	3.73	95	22.3	82.6	60	28	13.8	34.9	7	4	22.2	1.91	FW30	●
3/4"	26.7	80S	3.91	115	25.4	88.9	70	44	18.9	42.9	7	4	22.2	2.59	FW30	●
1"	33.5	80S	4.55	125	28.6	101.6	73	52	24.4	50.8	7	4	25.4	3.77	FW30	●



Plan Svetsfläns

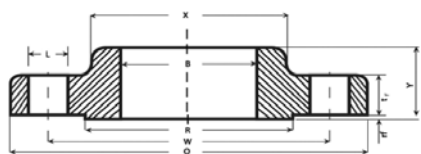
SO / RF Class 150
ASTM-A 182, ASME B16.5
EN 10204 3.1



NPS	mm	O mm	tf mm	W mm	Y mm	X mm	B mm	R mm	rf mm	Bult		Kg / st	Art nr	ASTM 304/L	ASTM 316/L
										Antal	L mm				
1/2"	21.3	90	9.6	60.3	14	30	22.2	34.9	2	4	15.9	0.39	FS10	●	●
3/4"	26.7	100	11.2	69.9	14	38	27.7	42.9	2	4	15.9	0.56	FS10	●	●
1"	33.5	110	12.7	79.4	16	49	34.5	50.8	2	4	15.9	0.78	FS10	●	●
1.1/4"	42.2	115	14.3	88.9	19	59	43.2	63.5	2	4	15.9	1.02	FS10	●	●
1.1/2"	48.3	125	15.9	98.4	21	65	49.5	73.0	2	4	15.9	1.32	FS10	●	●
2"	60.5	150	17.5	120.7	24	78	61.9	92.1	2	4	19.1	2.05	FS10	●	●
2.1/2"	73.2	180	20.7	139.7	27	90	74.6	104.8	2	4	19.1	3.28	FS10	●	●
3"	88.9	190	22.3	152.4	29	108	90.7	127.0	2	4	19.1	3.83	FS10	●	●
4"	114.3	230	22.3	190.5	32	135	116.1	157.2	2	8	19.1	5.33	FS10	●	●
5"	141.3	255	22.3	215.9	35	164	143.8	185.7	2	8	22.2	6.08	FS10	●	●
6"	168.4	280	23.9	241.3	38	192	170.7	215.9	2	8	22.2	7.42	FS10	●	●
8"	219.2	345	27.0	298.5	43	246	221.5	269.9	2	8	22.2	12.12	FS10	●	●
10"	273.1	405	28.6	362.0	48	305	276.2	323.8	2	12	25.4	16.46	FS10	●	●
12"	323.9	485	30.2	431.8	54	365	327.0	381.0	2	12	25.4	26.28	FS10	●	●
14"	355.6	535	33.4	476.3	56	400	259.2	412.8	2	12	28.6	34.49	FS10	●	●
16"	406.4	595	35.0	539.8	62	457	410.5	469.9	2	16	28.6	44.85	FS10	●	●
18"														●	●
20"														●	●
24"														●	●

● =lager

Mått och ritningar är vägledande

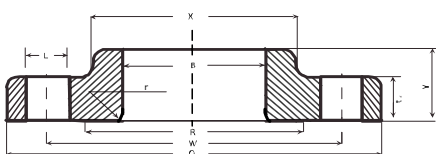


Plan Svetsfläns

SO / RF Class 300
ASTM-A 182, ASME B16.5
EN 10204 3.1



NPS	mm	O mm	tf mm	W mm	Y mm	X mm	B mm	R mm	rf mm	Bult		Kg / st	Art nr	ASTM 316/L
										Antal	L mm			
1/2"	21,3	95	12.7	66.7	21	38	22.2	34.9	2	4	15.9	0.64	FS15	●
3/4"	26,7	115	14.3	82.6	24	48	27.7	42.9	2	4	19.1	1.11	FS15	●
1"	33,5	125	15.9	88.9	25	54	34.5	50.8	2	4	19.1	1.36	FS15	●
1.1/4"	42,2	135	17.5	98.4	25	64	43.2	63.5	2	4	19.1	1.67	FS15	●
1.1/2"	48,3	155	19.1	114.3	29	70	49.5	73.0	2	4	22.2	2.51	FS15	●
2"	60,5	165	20.7	127.0	32	84	61.9	92.1	2	8	19.1	2.87	FS15	●
2.1/2"	73,2	190	23.9	149.2	37	100	74.6	104.8	2	8	22.2	4.30	FS15	●
3"	88,9	210	27.0	168.3	41	117	90.7	127.0	2	8	22.2	5.87	FS15	●
4"	114,3	255	30.2	200.0	46	146	116.1	157.2	2	8	22.2	9.64	FS15	●
5"	141,3	280	33.4	235.0	49	178	143.8	185.7	2	8	22.2	12.14	FS15	●
6"	168,4	320	35.0	269.9	51	206	170.7	215.9	2	12	22.2	15.69	FS15	●
8"	219,2	380	39.7	330.2	60	260	221.5	269.9	2	12	25.4	24.21	FS15	●



Lösfläns

LJ Class 150
ASTM-A 182, ASME B16.5
EN 10204 3.1



NPS	mm	O mm	tf mm	W mm	Y mm	X mm	B mm	R mm	rf mm	Bult		Kg / st	Art. No.	ASTM 316/L
										Antal	L mm			
1/2"	21.3	90	11.2	60.3	16	30	22.2	34.9	3	4	15.9	0.40	FL10	●
3/4"	26.7	100	12.7	69.9	16	38	28.2	42.9	3	4	15.9	0.62	FL10	●
1"	33.5	110	14.3	79.4	17	49	34.9	50.8	3	4	15.9	0.85	FL10	●
1.1/4"	42.2	115	15.9	88.9	21	59	43.7	63.5	5	4	15.9	1.10	FL10	●
1.1/2"	48.3	125	17.5	98.4	22	65	50	73.0	6	4	15.9	1.41	FL10	●
2"	60.5	150	19.1	120.7	25	78	62.5	92.1	8	4	19.1	2.17	FL10	●
2.1/2"	73.2	180	22.3	139.7	29	90	75.4	104.8	8	4	19.1	3.45	FL10	●
3"	88.9	190	23.9	152.4	30	108	91.4	127.0	10	4	19.1	3.99	FL10	●
4"	114.3	230	23.9	190.5	33	135	116.8	157.2	11	8	19.1	5.53	FL10	●
5"	141.3	255	23.9	215.9	36	164	144.4	185.7	11	8	22.2	6.26	FL10	●
6"	168.4	280	25.4	241.3	40	192	171.4	215.9	13	8	22.2	7.67	FL10	●
8"	219.2	345	28.6	298.5	44	246	222.2	269.9	13	8	22.2	12.46	FL10	●
10"	273.1	405	30.2	362.0	49	305	277.4	323.8	13	12	25.4	16.87	FL10	●
12"	323.9	485	31.8	431.8	56	365	382.2	381.0	13	12	25.4	26.89	FL10	●
14"														●
16"														●
18"														●
20"														●
24"														●

● =lager
Mått och ritningar är vägledande

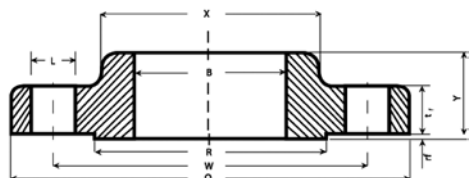


Blindfläns

BL / RF Class 150
ASTM-A 182, ASME B16.5
EN 10204 3.1



NPS	mm	O mm	tf mm	W mm	R mm	rf mm	Bult		Kg / st	Artikel nummer	ASTM 304/L	ASTM 316/L
							Antal	L mm				
1/2"	21.3	90	9.6	60.3	34.9	2	4	15.9	0.42	FB10	●	●
3/4"	26.7	100	11.2	69.9	42.9	2	4	15.9	0.61	FB10	●	●
1"	33.5	110	12.7	79.4	50.8	2	4	15.9	0.86	FB10	●	●
1.1/4"	42.2	115	14.3	88.9	63.5	2	4	15.9	1.16	FB10	●	●
1.1/2"	48.3	125	15.9	98.4	73.0	2	4	15.9	1.53	FB10	●	●
2"	60.5	150	17.5	120.7	92.1	2	4	19.1	2.41	FB10	●	●
2.1/2"	73.2	180	20.7	139.7	104.8	2	4	19.1	3.95	FB10	●	●
3"	88.9	190	22.3	152.4	127.0	2	4	19.1	4.90	FB10	●	●
4"	114.3	230	22.3	190.5	157.2	2	8	19.1	7.03	FB10	●	●
5"	141.3	255	22.3	215.9	185.7	2	8	22.2	8.63	FB10	●	●
6"	168.4	280	23.9	241.3	215.9	2	8	22.2	11.30	FB10	●	●
8"	219.2	345	27.0	298.5	269.9	2	8	22.2	19.65	FB10	●	●
10"	273.1	405	28.6	362.0	323.8	2	12	25.4	28.74	FB10	●	●
12"											●	●
14"											●	●
16"											●	●
18"											●	●
20"											●	●
24"											●	●



Svetsfläns med klack

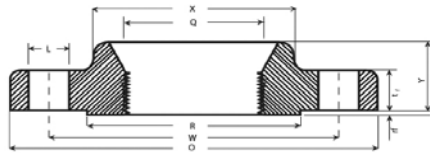
SL / RF Class 150
ASTM-A 182, ASME B16.5
EN 10204 3.1



NPS	mm	SCH	mm	O mm	tf mm	W mm	Y mm	X mm	D mm	R mm	rf mm	Bult		Kg / st	Art nr	ASTM 316/L
												Antal	L mm			
1/2"	21.3	40S	2.77	90	9.6	60.3	14	30	10	34.9	2	4	15.9	0.40	F010	●
3/4"	26.7	40S	2.89	100	11.2	69.9	14	38	11	42.9	2	4	15.9	0.57	F010	●
1"	33.5	40S	3.38	110	12.7	79.4	16	49	13	50.8	2	4	15.9	0.79	F010	●
1.1/4"	42.2	40S	3.56	115	14.3	88.9	19	59	14	63.5	2	4	15.9	1.05	F010	●
1.1/2"	48.3	40S	3.68	125	15.9	98.4	21	65	16	73.0	2	4	15.9	1.35	F010	●
2"	60.5	40S	3.91	150	17.5	120.7	24	78	17	92.1	2	4	19.1	2.10	F010	●
2.1/2"	73.2	40S	5.16	180	20.7	139.7	27	90	19	104.8	2	4	19.1	3.38	F010	●
3"	88.9	40S	5.49	190	22.3	152.4	29	108	21	127.0	2	4	19.1	3.96	F010	●
4"	114.3	40S	6.02	215	23.9	190.5	33	135	23	157.0	2	8	19.1	5.35	F010	●

● =lager

Mått och ritningar är vägledande

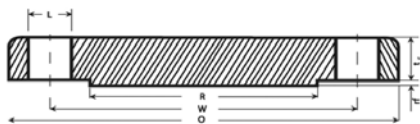


Gängfläns

TR / RF Class 150
ASTM-A 182, ASME B16.5
EN 10204 3.1



NPS	mm	O mm	tf mm	W mm	Y mm	X mm	Q mm	R mm	rf mm	Bolts		Kg / st	Art nr	ASTM 304/L	ASTM 316/L
										No	L mm				
1/2"	21.3	90	9.6	60.3	14	30	1/2" NPT	34.9	2	4	15.9	0.41	FT10	●	●
3/4"	26.7	100	11.2	69.9	14	38	3/4" NPT	42.9	2	4	15.9	0.57	FT10		●
1"	33.5	110	12.7	79.4	16	49	1" NPT	50.8	2	4	15.9	0.80	FT10	●	●
1.1/4"	42.2	115	14.3	88.9	19	59	1.1/4" NPT	63.5	2	4	15.9	1.05	FT10		●
1.1/2"	48.3	125	15.9	98.4	21	65	1.1/2" NPT	73.0	2	4	15.9	1.37	FT10		●
2"	60.5	150	17.5	120.7	24	78	2" NPT	92.1	2	4	19.1	2.12	FT10	●	●



Blindfläns BL / RF Class 300

ASTM-A 182, ASME B16.5
EN 10204 3.1



NPS	mm	O mm	tf mm	W mm	R mm	rf mm	Bult		Kg / st	Artikel nummer	ASTM 316/L
							Antal	L mm			
1/2"	21.3	95	12.7	66.7	34.9	2	4	15.9	0.65	FB15	●
3/4"	26.7	115	14.3	82.6	42.9	2	4	19.1	1.10	FB15	●
1"	33.5	125	15.9	88.9	50.8	2	4	19.1	1.39	FB15	●
1.1/4"	42.2	135	17.5	98.4	63.5	2	4	19.1	1.78	FB15	●
1.1/2"	48.3	155	19.1	114.3	73.0	2	4	22.2	2.67	FB15	●
2"	60.5	165	20.7	127	92.1	2	8	19.1	3.17	FB15	●
2.1/2"	73.2	190	23.9	149.2	104.8	2	8	22.2	4.83	FB15	●
3"	88.9	210	27	168.3	127.0	2	8	22.2	6.84	FB15	●
4"	114.3	255	30.2	200	157.2	2	8	22.2	11.52	FB15	●
5"	141.3	280	33.4	235	185.7	2	8	22.2	15.51	FB15	●
6"	168.4	320	35	269.9	215.9	2	12	22.2	20.95	FB15	●
8"	219.2	380	39.7	330.2	269.9	2	12	25.4	4.35	FB15	●

● =lager
Mått och ritningar är vägledande