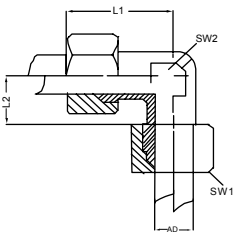


Koppling

DIN 2353 / DIN EN ISO 8434-1
EN 10204 3.1



AD mm	Kod	Bar	L1 mm	L2 mm	SW1 mm	SW2 mm	Artikel nummer	Kg / st	EN 1.4571
6	L	315	44	10	14	12	HS10	0.06	●
8	L	315	45	11	17	14	HS10	0.08	●
10	L	315	48	13	19	17	HS10	0.11	●
12	L	315	49	14	22	19	HS10	0.14	●
14	S	630	63	22	27	24	HS15	0.30	●
15	L	315	24	16	27	24	HS10	0.23	●
16	S	400	65	21	30	27	HS15	0.35	●
18	L	315	56	16	32	27	HS10	0.35	●
20	S	400	73	23	36	32	HS15	0.58	●
22	L	160	63	20	36	32	HS10	0.44	●
25	S	400	84	26	46	41	HS15	0.95	●
28	L	160	65	21	41	41	HS10	0.55	●
30	S	400	88	27	50	46	HS15	1.12	●

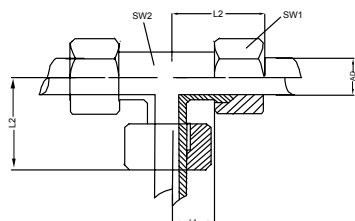


Vinkel 90°

DIN 2353 / DIN EN ISO 8434-1
EN 10204 3.1



AD mm	Kod	Bar	L1 mm	L2 mm	SW1 mm	SW2 mm	Artikel nummer	Kg / st	EN 1.4571
6	L	315	27	12.0	14	12	HE10	0.04	●
8	L	315	29	14.0	17	12	HE10	0.06	●
10	L	315	30	15.0	19	14	HE10	0.07	●
12	L	315	32	17.0	22	17	HE10	0.10	●
14	S	630	40	22.0	27	19	HE15	0.21	●
15	L	315	36	21.0	27	19	HE10	0.17	●
16	S	400	43	24.5	30	24	HE15	0.26	●
18	L	315	40	23.5	32	24	HE10	0.25	●
20	S	400	48	26.5	36	27	HE15	0.41	●
22	L	160	44	27.5	36	27	HE10	0.32	●
25	S	400	54	30.0	46	36	HE15	0.45	●
28	L	160	47	30.5	41	36	HE10	1.00	●
30	S	400	62	35.5	50	41	HE15	1.68	●

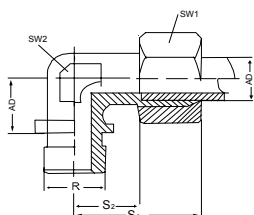


T-rör

DIN 2353 / DIN EN ISO 8434-1
EN 10204 3.1



AD mm	Kod	Bar	L1 mm	L2 mm	SW1 mm	SW2 mm	Artikel nummer	Kg / st	EN 1.4571
6	L	315	12.0	27	14	12	HT10	0.002	●
8	L	315	14.0	29	17	12	HT10	0.002	●
10	L	315	15.0	60	19	14	HT10	0.003	●
12	L	315	17.0	32	22	17	HT10	0.003	●
14	S	630	22.0	40	27	17	HT15	0.004	●
15	L	315	21.0	36	27	19	HT10	0.004	●
16	S	400	24.4	43	30	24	HT15	0.004	●
18	L	315	23.5	40	32	24	HT10	0.005	●
20	S	400	26.5	48	36	27	HT15	0.009	●
22	L	160	27.5	44	36	27	HT10	0.006	●
25	S	400	3.0	54	46	36	HT15	0.011	●
28	L	160	30.5	47	41	36	HT10	0.008	●
30	S	400	35.5	62	50	41	HT15	0.015	●



Vinkel 90°

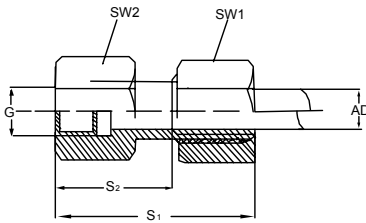
DIN 2353 / DIN EN ISO 8434-1
EN 10204 3.1



AD mm	Kod	Bar	L1 mm	L2 mm	SW1 mm	SW2 mm	Artikel nummer	Kg / st	EN 1.4571
6	1/8"	L	315	27	20.0	14	HW30	0.03	●
6	1/4"	L	315	27	12.0	14	HW30	0.06	●
8	1/8"	L	315	29	14.0	17	HW30	0.05	●
8	1/4"	L	315	29	14.0	17	HW30	0.06	●
8	3/8"	L	315	32	17.0	17	HW30	0.08	●
8	1/2"	L	315	35	19.5	17	HW30	0.10	●
10	1/4"	L	315	30	15.0	19	HW30	0.06	●
10	3/8"	L	315	30	15.0	19	HW30	0.06	●
10	1/2"	L	315	37	21.0	19	HW30	0.09	●
12	1/4"	L	315	32	17.5	22	HW30	0.07	●
12	3/8"	L	315	32	17.5	22	HW30	0.08	●
12	1/2"	L	315	32	17.5	22	HW30	0.11	●
14	3/8"	S	400	40	22.0	27	HW35	0.15	●
14	1/2"	S	400	40	22.0	27	HW35	0.16	●
15	3/8"	L	315	36	21.0	27	HW30	0.12	●
15	1/2"	L	315	36	21.0	27	HW30	0.13	●
16	1/2"	S	400	43	24.5	30	HW35	0.20	●
18	1/2"	L	315	40	23.5	32	HW30	0.19	●

● =lager

Mått och ritningar är vägledande

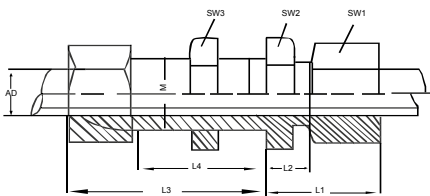


Övergångsnippel

DIN 2353 / DIN EN ISO 8434-1
EN 10204 3.1



AD mm	Kod	Bar	G mm	S1 mm	S2 mm	SW1 mm	SW2 mm	Artikel nummer	Kg / st	EN 1.4571
6	L	315	1/8"	36.0	19.0	14	14	HF20	0.03	●
6	L	315	1/4"	41.0	24.0	19	19	HF20	0.04	●
8	L	315	1/4"	36.0	24.0	17	19	HF20	0.05	●
10	L	315	1/4"	42.0	25.0	19	19	HF20	0.06	●
12	L	315	3/8"	43.0	26.0	22	24	HF20	0.09	●
12	L	315	1/2"	48.0	30.0	22	27	HF20	0.10	●
14	S	400	1/2"	52.0	32.0	27	27	HF25	0.15	●
15	L	315	3/8"	46.0	27.0	27	24	HF20	0.10	●
15	L	315	1/2"	49.0	31.0	27	27	HF20	0.11	●
16	S	400	1/2"	53.0	31.5	30	27	HF25	0.18	●
18	L	315	3/8"	47.0	26.5	32	27	HF20	0.14	●
18	L	315	1/2"	50.5	30.5	32	27	HF20	0.15	●
20	S	400	1/2"	57.0	57.0	36	32	HF25	0.25	●
20	S	400	3/4"	60.0	60.0	36	32	HF25	0.30	●
22	L	160	3/4"	56.0	35.5	36	32	HF20	0.27	●
25	S	315	1"	66.5	37.5	46	41	HF25	0.47	●
28	L	160	1"	60.5	38.0	41	41	HF20	0.31	●
30	S	315	1.1/4"	72.5	42.0	50	55	HF25	0.72	●



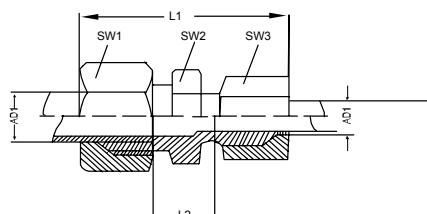
Väggenomföringskoppling

DIN 2353 / DIN EN ISO 8434-1
EN 10204 3.1



AD mm	Kod	Bar	L1 mm	L2 mm	L3 mm	L4 mm	SW1 mm	SW2 mm	SW3 mm	Artikel nummer	Kg / st	EN 1.4571
6	L	315	22	7.0	42	27	14	17	17	HB10	0.06	●
8	L	315	23	8.0	42	27	17	19	19	HB10	0.08	●
10	L	315	25	10.0	43	28	19	22	22	HB10	0.11	●
12	L	315	25	10.0	44	29	22	24	24	HB10	0.14	●
14	S	630	35	17.0	50	32	27	30	30	HB15	0.30	●
15	L	315	27	12.0	46	31	27	30	27	HB10	0.23	●
16	S	400	35	16.5	50	31.5	30	32	32	HB15	0.35	●

● =lager
Mått och ritningar är vägledande



Förminskningskoppling

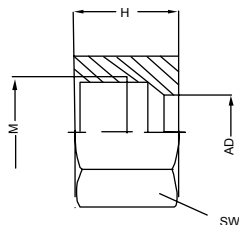
DIN 2353 / DIN EN ISO 8434-1
EN 10204 3.1



AD1 mm	AD1 mm	Kod	Bar	L1 mm	L2 mm	SW1 mm	SW2 mm	SW3 mm	Artikel nummer	Kg / st	EN 1.4571
8	6	L	315	45.5	11.0	17	14	14	HR10	0.05	●
10	6	L	315	47.0	12.0	19	17	14	HR10	0.06	●
10	8	L	315	47.0	12.0	19	17	17	HR10	0.06	●
12	6	L	315	48.0	13.0	22	19	14	HR10	0.06	●
12	8	L	315	48.0	13.0	22	19	17	HR10	0.07	●
12	10	L	315	49.5	14.0	22	19	19	HR10	0.08	●
14	10	S	630	60.0	20.5	27	24	22	HR15	0.13	●
14	12	S	630	60.0	20.5	27	24	24	HR15	0.17	●
15	6	L	315	50.5	14.0	27	24	14	HR10	0.10	●
15	8	L	315	50.5	14.0	27	24	17	HR10	0.11	●
15	10	L	315	52.0	15.0	27	24	19	HR10	0.11	●
15	12	L	315	52.0	15.0	27	24	22	HR10	0.12	●
16	10	S	400	60.5	20.0	30	27	22	HR15	0.19	●
16	12	S	400	60.5	20.0	30	27	24	HR15	0.19	●
16	14	S	400	63.5	21.5	30	27	27	HR15	0.22	●
18	8	L	315	52.0	14.5	32	27	27	HR10	0.12	●
18	10	L	315	53.5	15.5	32	27	19	HR10	0.15	●
18	12	L	315	53.5	15.5	32	27	22	HR10	0.16	●
18	15	L	315	56.5	16.5	32	27	27	HR10	0.18	●
20	10	S	400	65.5	22.0	36	32	22	HR15	0.27	●
20	12	S	400	65.5	22.0	36	32	24	HR15	0.28	●
20	14	S	400	68.5	23.0	36	32	27	HR15	0.30	●
20	16	S	400	69.5	23.0	36	32	30	HR15	0.32	●
22	12	L	160	57.0	17.5	36	32	22	HR10	0.20	●
22	15	L	160	59.0	18.5	36	32	27	HR10	0.22	●
28	22	L	160	64.0	21.0	41	41	36	HR10	0.31	●

● =lager

Mått och ritningar är vägledande

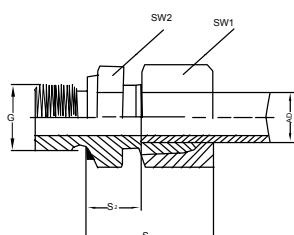


Mutter

DIN 2353 / DIN EN ISO 8434-1
EN 10204 3.1



AD mm	Kod	Bar	SW mm	H mm	M mm	Artikel nummer	Kg / st	EN 1.4571
6	L	315	14	14.5	M12x1,5	HN40	0.010	●
8	L	315	17	14.5	M14x1.5	HN40	0.015	●
10	L	315	19	15.5	M16x1.5	HN40	0.019	●
12	L	315	22	15.5	M18x1.5	HN40	0.024	●
15	L	315	27	17	M22x1.5	HN40	0.041	●
22	L	160	36	20	M30x2	HN40	0.081	●
28	L	160	41	21	M36x2	HN40	0.091	●
14	S	630	27	20.5	M22x1,5	HN45	0.050	●
16	S	400	30	20.5	M24x1,5	HN45	0.064	●
20	S	400	36	24	M30x2	HN45	0.102	●
25	S	400	46	27	M36x2	HN45	0.210	●



Övergångsnippel

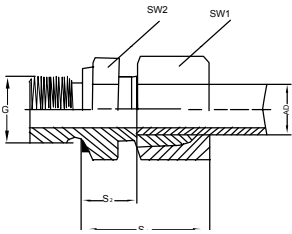
DIN 2353 / DIN EN ISO 8434-1
EN 10204 3.1



AD mm	Kod	Bar	G mm	SW1 mm	SW2 mm	S1 mm	S2 mm	Artikel nummer	Kg / st	EN 1.4571
6	L	315	1/8"	14	14	23	8.5	HM20	0.03	●
6	L	315	1/4"	14	17	27	9.0	HM20	0.04	●
6	L	315	3/8"	14	22	27	11.5	HM20	0.06	●
6	L	315	1/2"	14	27	29	12.0	HM20	0.10	●
8	L	315	1/8"	17	14	26	9.5	HM20	0.03	●
8	L	315	1/4"	17	19	25	10.0	HM20	0.04	●
8	L	315	3/8"	17	22	28.5	11.5	HM20	0.06	●
8	L	315	1/2"	17	27	28.5	13.0	HM20	0.10	●
10	L	315	1/8"	19	17	27.5	11.0	HM20	0.05	●
10	L	315	1/4"	19	19	26	11.0	HM20	0.05	●
10	L	315	3/8"	19	22	30.5	12.5	HM20	0.09	●
10	L	315	1/2"	19	27	32.5	13.0	HM20	0.10	●
12	L	315	1/8"	22	19	29	11.0	HM20	0.05	●
12	L	315	1/4"	22	19	30	12.0	HM20	0.06	●
12	L	315	3/8"	22	22	27	12.5	HM20	0.07	●
12	L	315	1/2"	22	27	31	13.0	HM20	0.10	●
14	S	630	3/8"	27	24		17.0	HM25	0.13	●
14	S	630	1/2"	27	27	37	19.0	HM25	0.15	●
14	S	630	3/4"	27	32		19.0	HM25	0.20	●

● =lager

Mått och ritningar är vägledande



Övergångsnippel

DIN 2353 / DIN EN ISO 8434-1
EN 10204 3.1



AD mm	Kod	Bar	G mm	SW1 mm	SW2 mm	S1 mm	S2 mm	Artikel nummer	Kg / st	EN 1.4571
15	L	315	1/4"	27	24	32	13.0	HM20	0.08	●
15	L	315	3/8"	27	24	31	13.5	HM20	0.10	●
15	L	315	1/2"	27	27	29	14.0	HM20	0.11	●
15	L	315	3/4"	27	32	32.5	15.0	HM20	0.17	●
16	S	400	3/8"	30	27		18.0	HM25	0.16	●
16	S	400	1/2"	30	27	37	14.0	HM25	0.16	●
16	S	400	3/4"	30	32	39	20.5	HM25	0.21	●
18	L	315	3/8"	32	27	33	12.5	HM20	0.14	●
18	L	315	1/2"	32	27	31	14.5	HM20	0.14	●
18	L	315	3/4"	32	32	34	14.5	HM20	0.19	●
20	S	400	1/2"	36	32		20.5	HM25	0.25	●
20	S	400	3/4"	36	32	42	20.5	HM25	0.28	●
20	S	400	1"	36	41		22.5	HM25	0.39	●
20	S	400	1.1/4"	36	50		22.5	HM25	0.40	●
22	L	160	1/2"	36	32	37	16.5	HM20	0.20	●
22	L	160	3/4"	36	32	33	16.5	HM20	0.20	●
22	L	160	1"	36	41	38	17.5	HM20	0.29	●
25	S	400	1/2"	46	41		23.0	HM25	0.40	●
25	S	400	3/4"	46	41		23.0	HM25	0.46	●
25	S	400	1"	46	41	47	18.0	HM25	0.49	●
25	S	400	1.1/4"	46	50		23.0	HM25	0.67	●
28	L	160	1/2"	41	41		17.5	HM20	0.20	●
28	L	160	3/4"	41	41	38	17.5	HM20	0.30	●
28	L	160	1"	41	41	34	17.5	HM20	0.27	●
28	L	160	1.1/4"	41	50		18.5	HM20	0.35	●
30	S	400	1"	50	46		23.5	HM20	0.58	●
30	S	400	1.1/4"	50	50	50	23.5	HM25	0.67	●
30	S	400	1.1/2"	50	55		23.5	HM25	0.67	●

Smörjmedel

Artikel nummer	Kg / st
HP 60	0.25

● =lager
Mått och ritningar är vägledande